



RMS series



The RMS series are an off-the-shelf line filter which can be used in commercial applications such as data centers and manufacturing.

- Single Phase
- High Attenuation Characteristics (150KHz ~ 1MHz)
- 2-Stage Filter
- Low Leakage / Safety Cover
- Easy Push-Down Terminal Block
- Din Rail Mountable (Option)



		UNIT	RMS20-06	RMS20-10	RMS20-16	RMS20-20	RMS20-30
INPUT	Max Voltage	V	AC 250 / DC 250				
	Frequency	Hz	50/60				
	Phase		Single phase				
	Rated Current *1	A	6	10	16	20	30
	Voltage Drop	V	0.3V max				
	Leakage Current	125V 250V	0.5mA max at 60Hz 1.0 mA max at 60Hz				
	DC Resistance	mΩ	130	65	20	14	7
Temp Rise	°C	55C max					

		RMS20-06	RMS20-10	RMS20-16	RMS20-20	RMS20-30
ISOLATION	Isolation Resistance	100MΩ Min (500VDC / 1Min)				
	Test Voltage	2,500VAC (at cut off current 100mA / 1Min)				
ENVIRONMENT	Operating Temp & Humidity	-25 ~ +85°C 20~95% RH (Non Condensing)				
	Storage Temp & Humidity	-40 ~ +85°C 20~95% RH (Non Condensing)				
	Vibration	10~55Hz at 2G 3minutes period, 1hour each X,Y and Z				
DIMENSION	WxLxH (mm)	90.5 x 40 x 50 (without projection)				
WEIGHT	Grams	240 (+10 if din rail option)				
SAFETY		Approved by standard UL1283, CSA C22.2 No.8(C-UL), IEC/EN60939-2				

Notes:

*1 For temperatures below 55C. See derating when above 55C

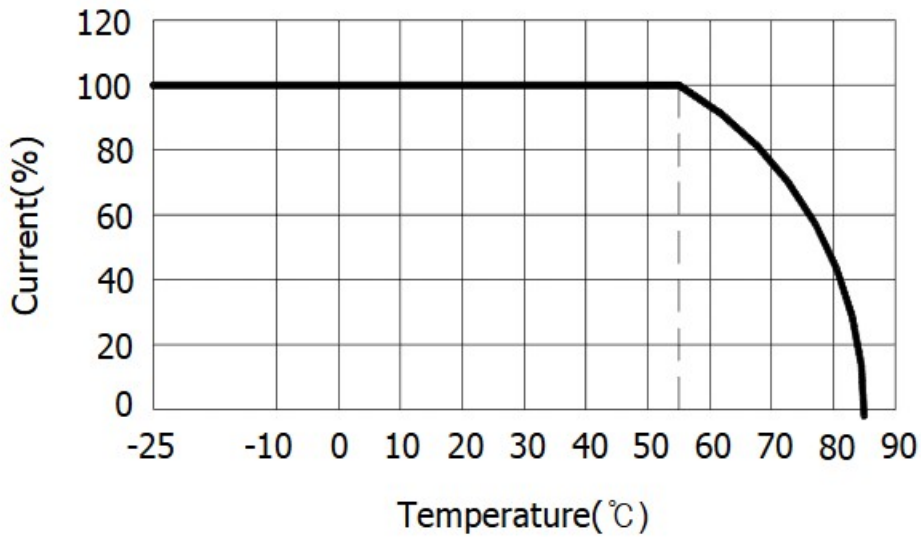




HOW TO ORDER

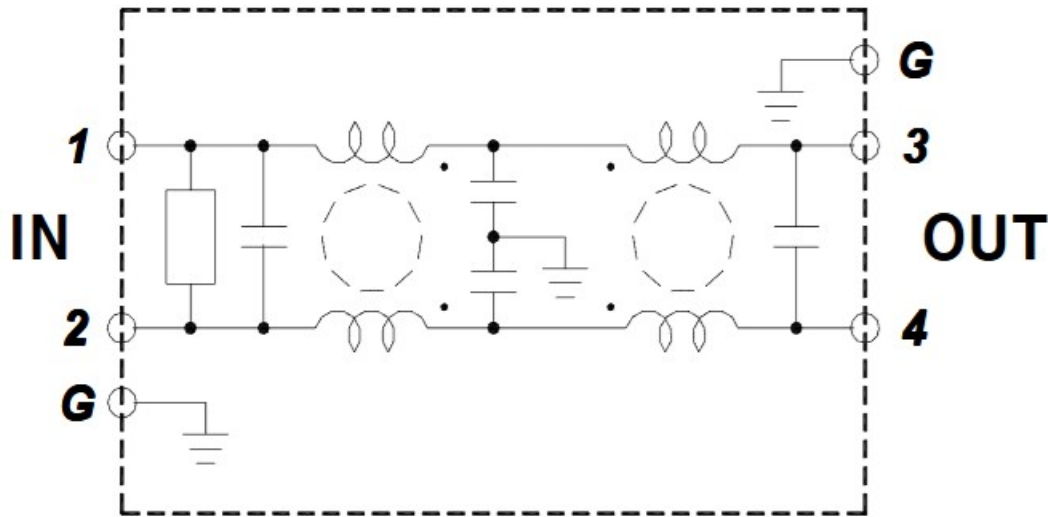
SERIES	PHASE	VOLTAGE	CURRENT	ADDITIONAL OPTIONS
RMS20-06	1Ø	AC250/DC250	6	DIN rail
RMS20-10	1Ø	AC250/DC250	10	DIN rail
RMS20-16	1Ø	AC250/DC250	16	DIN rail
RMS20-20	1Ø	AC250/DC250	20	DIN rail
RMS20-30	1Ø	AC250/DC250	30	DIN rail

TEMPERATURE DERATING





CIRCUIT DIAGRAM



Connections

1- 2. Terminal Connection

Marking	Pin Connection		Function
1	INPUT	AC L	Noise Filter AC input Terminal
2		AC N	
3	OUTPUT	AC L	Noise Filter AC output Terminal
4		AC N	
G	Flame ground		CASE

1- 3. Applicable Electric Cable

Current	Minimum line diameter	
	Cross-sectional area (mm ²)	AWG SIZE
6	0.75	18
10	1.0	16
16	1.5	14
20	2.5	12
30	4.0	10

1- 4. Recommended Clamping Torque

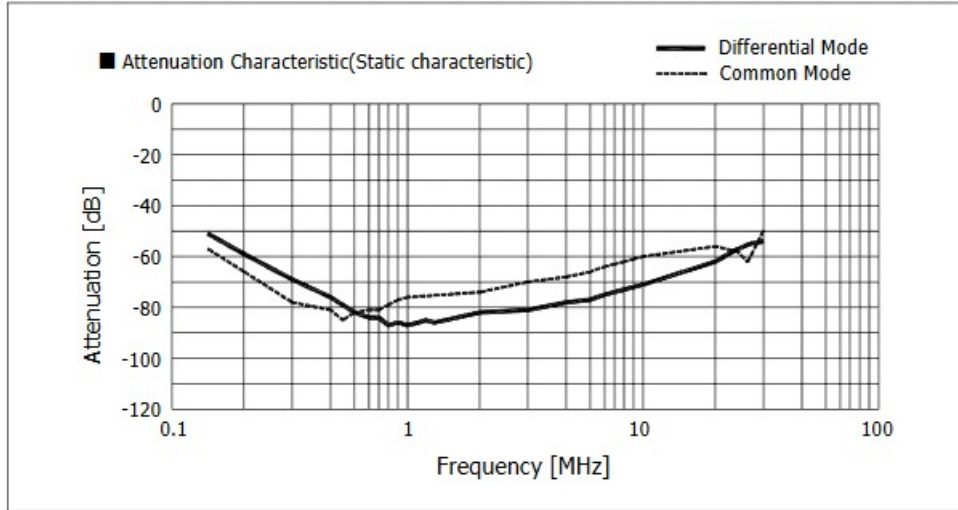
Screw	Torque
M4	1.27N·m
M5	2.50N·m



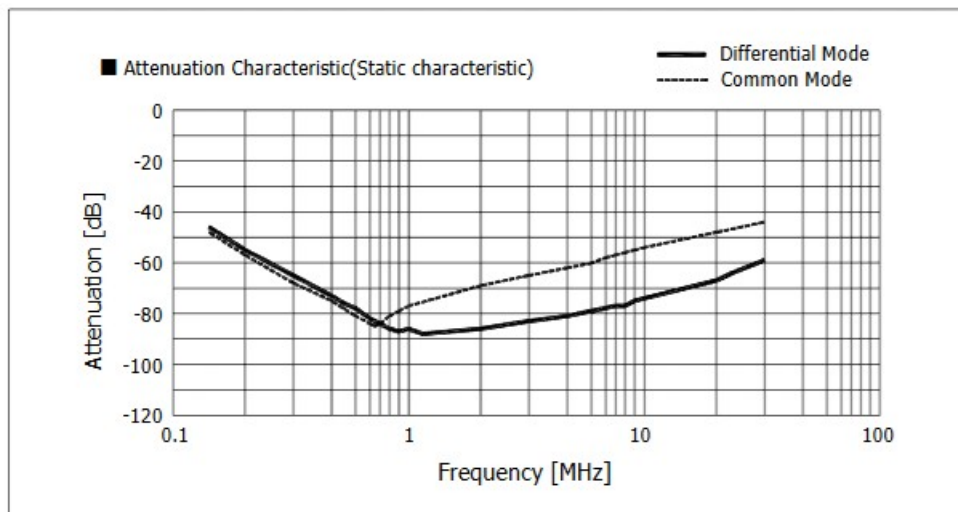


ATTENUATION

RMS20-06, RMS20-06-DIN

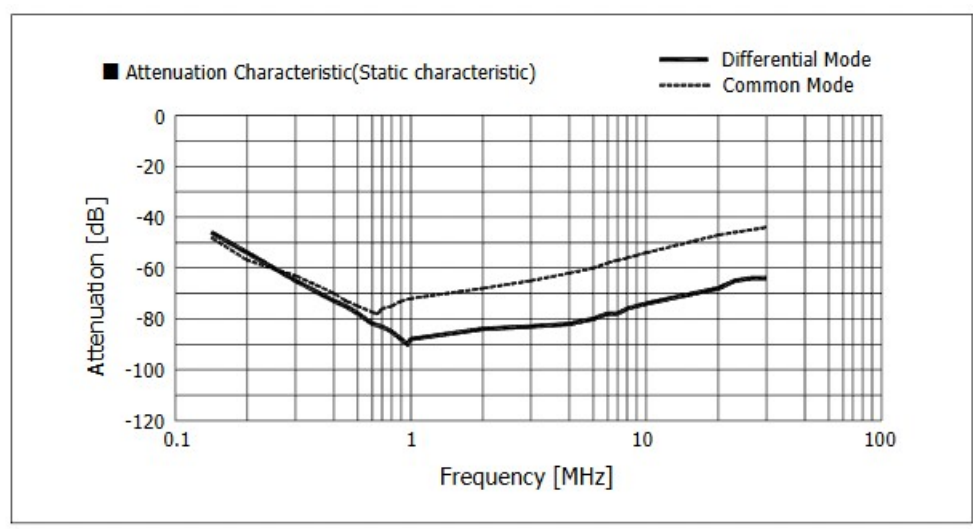


RMS20-10, RMS20-10-DIN

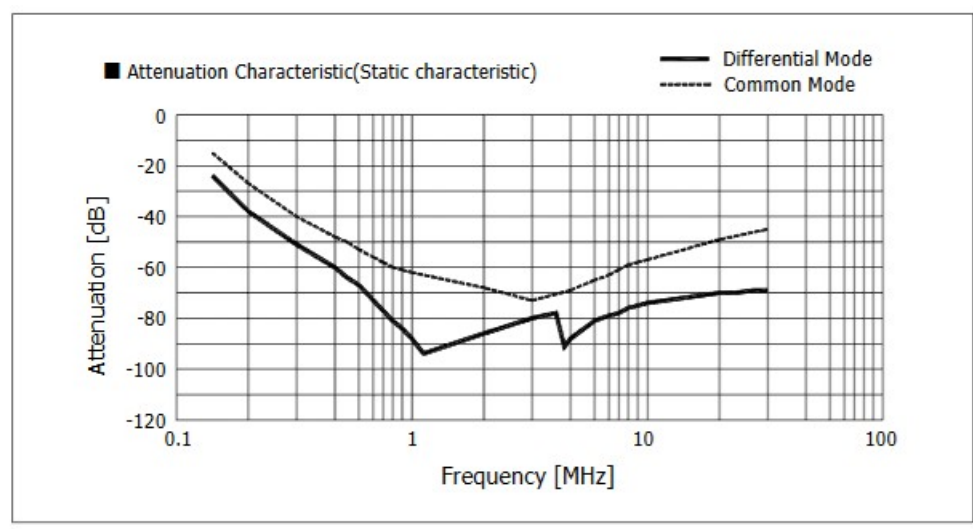




RMS20-16, RMS20-16-DIN

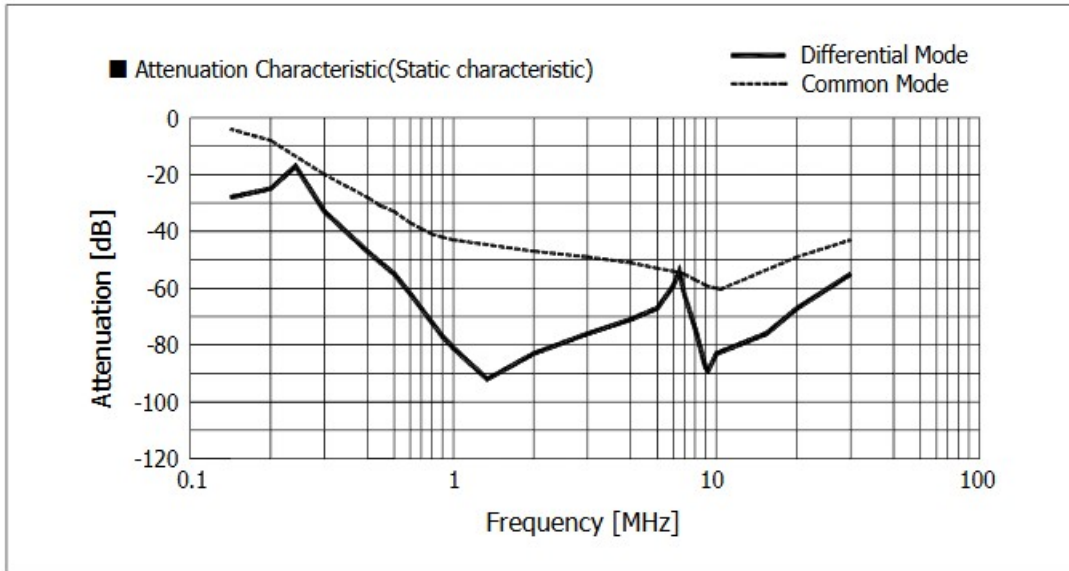


RMS20-20, RMS20-20-DIN





RMS20-20, RMS20-20-DIN



$$\text{Attenuation[dB]} = -20\log(E1/E2)$$

E1 = Voltage in state without filter E2 = Voltage in state with filters

How to Setup

