



## DTD120-SX-F-W6

## 120W External Power Supply



### FEATURES

- 3-pole IEC320-C14 AC inlet, Class I
- Output voltage range from +12V to +48V
- Meet Efficiency Level VI & CoC V5 Tier 2 requirements
- No load Power consumption < 150mW
- Power ON LED indicator
- **3 year warranty**

Output voltage and constant current level can be adjusted through potential meter. Constant current level adjustable through output cable with 1~10Vdc.

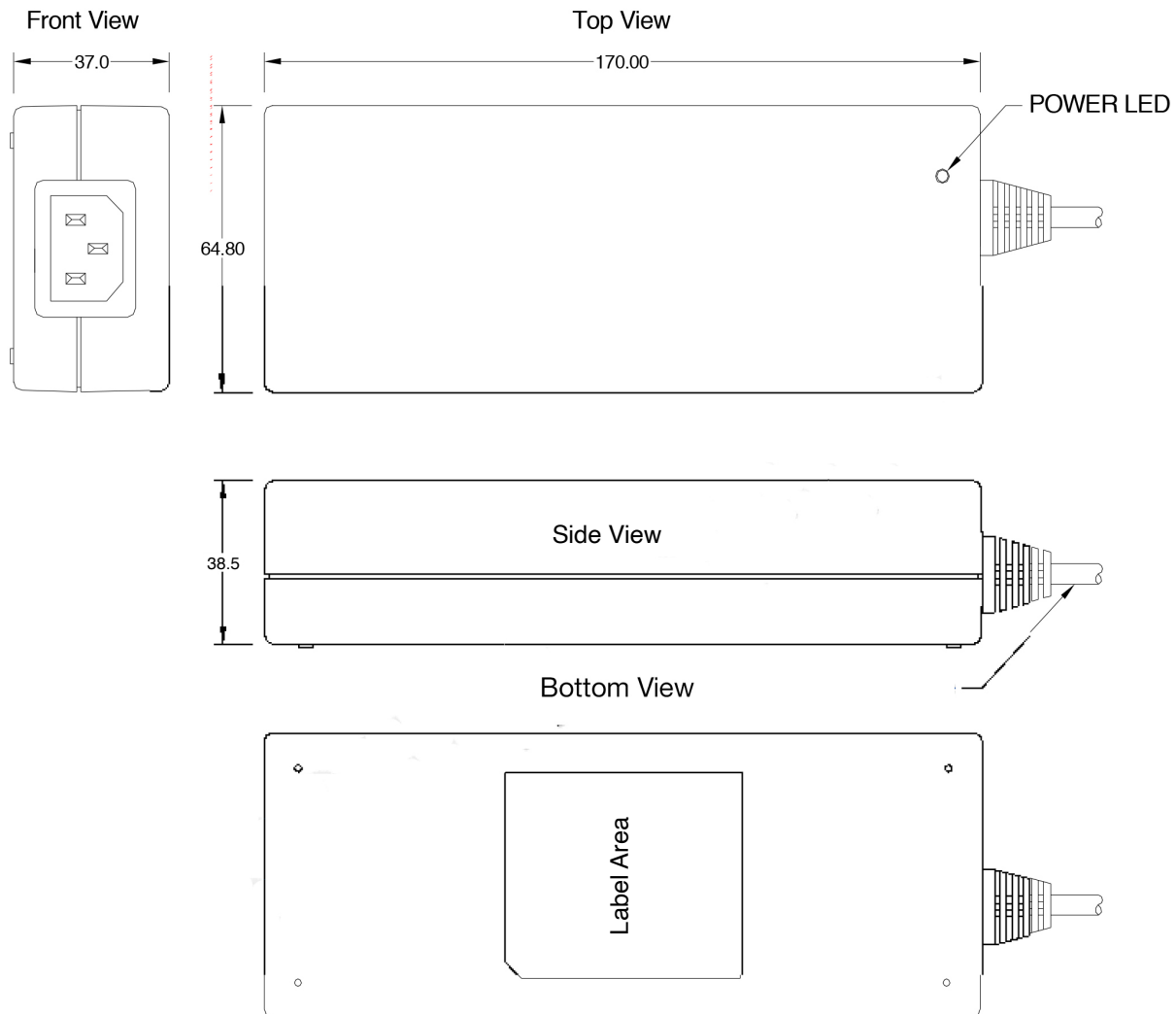


| MODEL/CHANNEL                 |                            | Unit | DTD120-12SX-F-W6   | DTD120-19SX-F-W6             | DTD120-24SX-F-W6                | DTD120-28SX-F-W6 | DTD120-48SX-F-W6 |  |
|-------------------------------|----------------------------|------|--|------------------------------|---------------------------------|------------------|------------------|--|
| <b>OUTPUT</b>                 | Norminal Voltage           | V    | 12   | 19                           | 24                              | 28               | 48               |  |
|                               | Norminal Current           | A    | 8.33   | 6.3                          | 5                               | 4.3              | 2.5              |  |
|                               | Output Regulation          | A    | 5  | 5                            | 5                               | 5                | 5                |  |
|                               | Output Power               | W    | 100  | 120                          | 120                             | 120              | 120              |  |
|                               | Ripple & Noise Max         | mV   | 240  | 240                          | 240                             | 240              | 240              |  |
|                               | Turn-on Time Typ.          | ms   | 800 (AC IN 100V, Io=100%)  |                              |                                 |                  |                  |  |
| <b>INPUT</b>                  | Input Voltage Range        | V    | 90-264VAC  |                              |                                 |                  |                  |  |
|                               | Frequency                  | A    | 47-63Hz  |                              |                                 |                  |                  |  |
|                               | Input Current(rms)         | %    | 2A @ 90Vac;<br>1A @ 264Vac max   |                              |                                 |                  |                  |  |
|                               | Power factor               | -    | > 0.95 @115VAC; > 0.90 @230VAC @full load  |                              |                                 |                  |                  |  |
|                               | Efficiency                 | %    | <89% @ full load, 115VAC   |                              |                                 |                  |                  |  |
|                               | CEC                        | %    | No load power consumption <0.3 W @240 VAC  |                              |                                 |                  |                  |  |
| <b>Protection</b>             | Short circuit protection   | V    | Auto Recovery  |                              |                                 |                  |                  |  |
|                               | Over Voltage Protection    | A    | AC Recycle   |                              |                                 |                  |                  |  |
| <b>Environmental Agencies</b> | Safety Standards           | -    | UL 60950-1<br>TUV EN62368-1  | UL 62368-1<br>CB IEC 60950-1 | TUV EN60950-1<br>CB IEC 62368-1 |                  |                  |  |
|                               | EMC Standards              | -    | FCC Class B  | CISPR22 Class B              | EN 55032 Class B                | CE               |                  |  |
| <b>Environment</b>            | Operating temp. & Humidity | -    | -20 to +70°C (Derate linearly 2.0% per °C from 41 to 70°C & Derate linearly 1.0% per °C from 0 to -20°C) |                              |                                 |                  |                  |  |
|                               | Storage temp. & Humidity   | -    | -20°C to +85°C 10% ~ 90%   |                              |                                 |                  |                  |  |
|                               | MTBF demonstrated          | -    | > 500,000 hours at full load and 25°C ambient temperature (Bellcore TR-332)                              |                              |                                 |                  |                  |  |
| <b>Dimension</b>              | Size(LxWxH) / Weight       | mm/g | L170xW64.8xH37mm   |                              |                                 |                  |                  |  |





## MECHANICAL SPECIFICATION AC/DC Switching Adapter - Single Output



**Note:**

1. AC Inlet : IEC320-C14
2. Plastic Case Color : Black
3. Tolerance :  $\pm 0.5\text{mm}$
4. Unit : mm

## STANDARD OUTPUT CABLE

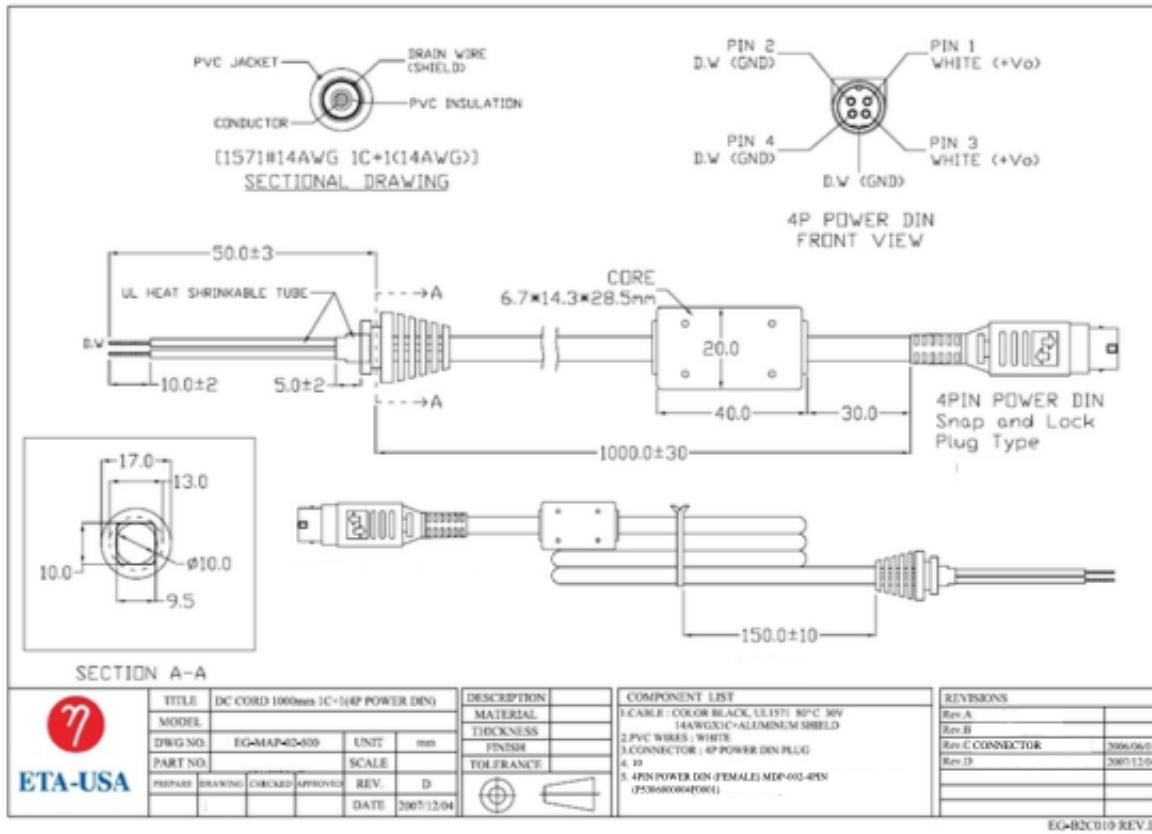
1. AWM 1571 # 14 AWG / 1C + SHIELDING, UL 80°C 30V VW-1, 1050 mm.
2. AWM 1185 # 16 AWG / 1C + SHIELDING, UL 80°C 300V VW-1, 1050 mm.
3. Depends on customers requirements.





## DTD-SX-F-W6- Drawings

## 120W



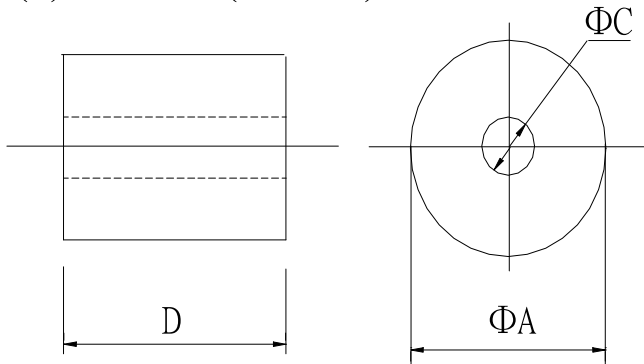


## DTD-SX-F-W6 Drawings

## 120W

ITEM: K5A RH 14.2X7.2X28.5

(1) DIMENSION (Unit: mm)



|   |       |                                      |      |    |
|---|-------|--------------------------------------|------|----|
| A | 14.20 | $\begin{matrix} + \\ - \end{matrix}$ | 0.40 | mm |
| C | 7.20  | $\begin{matrix} + \\ - \end{matrix}$ | 0.30 | mm |
| D | 28.50 | $\begin{matrix} + \\ - \end{matrix}$ | 0.80 | mm |

(2) ELECTRICAL REQUIREMENTS:

|           |      |        |          |           |               |
|-----------|------|--------|----------|-----------|---------------|
| Z         | 100  | - 0    | $\Omega$ | TEST FREQ | 25 MHz        |
| Z         | 150  | - 0    | $\Omega$ | TEST FREQ | 100 MHz       |
| COIL DATA | Qo=  |        | PF       | TEST FREQ |               |
|           | Lo=  |        |          |           |               |
| Winding   | 0.65 | $\Phi$ | X        | 100 mm    | 2U. E. W 1 TS |

