



DTE150-03X-F-W

150W

Triple Output



Optional +5VSB @2A with 5%
O/P regulation and 50mV ripple

- With Active PFC
- Universal Input
- AC Input: IEC 320-C14 Inlet
- Two year warranty
- High reliability
- 100% burn-in tested
- 40mm cooling fan with speed control
- 100% hi-pot tested
- Short-circuit, over load, over voltage protection

MODEL/CHANNEL		Unit	DTE150-03X-F-W		
Output Rating	Vo	Vo	+5Vdc	+12Vdc	-12Vdc
	Io (min)	A	1.5A	2A	0.15A
	Io (max)	A	15A	8A	1.5A
	Ripple & Noise	mV	50mV	120mV	120mV
	O/P Regulation	%	5%		
	Po (Max.)	-	150		
INPUT	Input Voltage Range	V	90 - 264VAC		
	Range	Hz	47-63Hz		
	Power Factor	VAC	>0.9 (20%~100% Load)		
	Efficiency	%	>80% @ full load, 115VAC		
	Ripple & Noise	%	1%		
Efficiency	Input range	VAC	90-264VAC		
	Frequency	Hz	47 - 63Hz		
	Power Factor	VAC	> 0.95 @115VAC; > 0.90 @230VAC @full load		
	Inrush current	VAC	< 75A peak @115VAC; < 150A peak @230VAC cold start @25°C		
	Input current (rms)	VAC	2.5A @90VAC; 1.25A @264VAC max.		
	Maximum output power (Po)	W	150Watts		
	Over Voltage Protection	-	Shutdown and latch off, AC recycle		
	Hold-up time	VAC	> 16ms typical @full load, 115VAC		
Environmental Specification	Operating Temperature	°C	0 to +50°C		
	Storage Temperature	°C	-10 to +70°C		
	Humidity	%	20~90%		
	MTBF demonstrated	-	>100,000 hours at full load and 25°C ambient temperature		
Environmental Agencies	Safety Standards	-	UL 60950-1 CSA 22.2-No.60950-1 TUV EN60950-1 CB IEC 60950-1		
	EMI Standards (Meet)	-	FCC Class B CISPR 22 Class B EN 55022 Class B CE		
Protection	Over Voltage Protection	-	Auto-recover		
	Over Load Protection	-	Auto-recover		
	Short circuit protection	-	Auto-recover		
Dimension/*Weight	mm/g	L188.5xW104.5xH60mm			

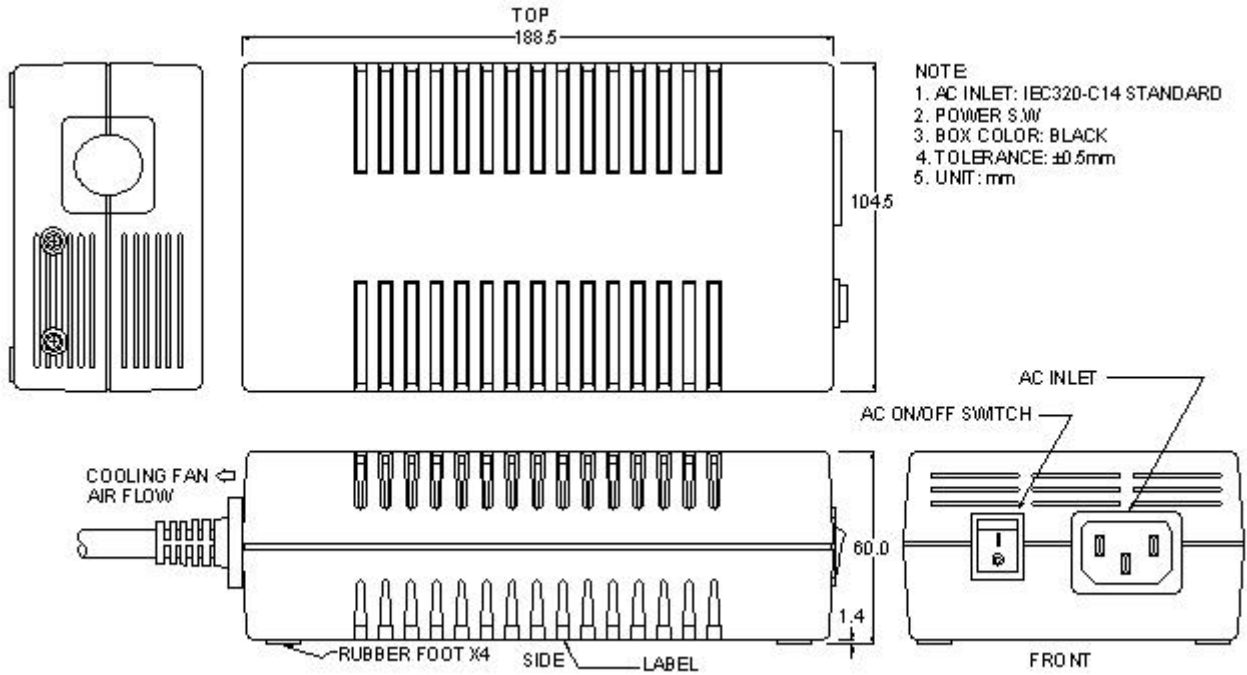
Note: 1. Peak-to-peak with 20MHz bandwidth with a tantalum 10uF
Hold-up time >10ms typical at full load @ 115VAC





Dimensions Diagrams

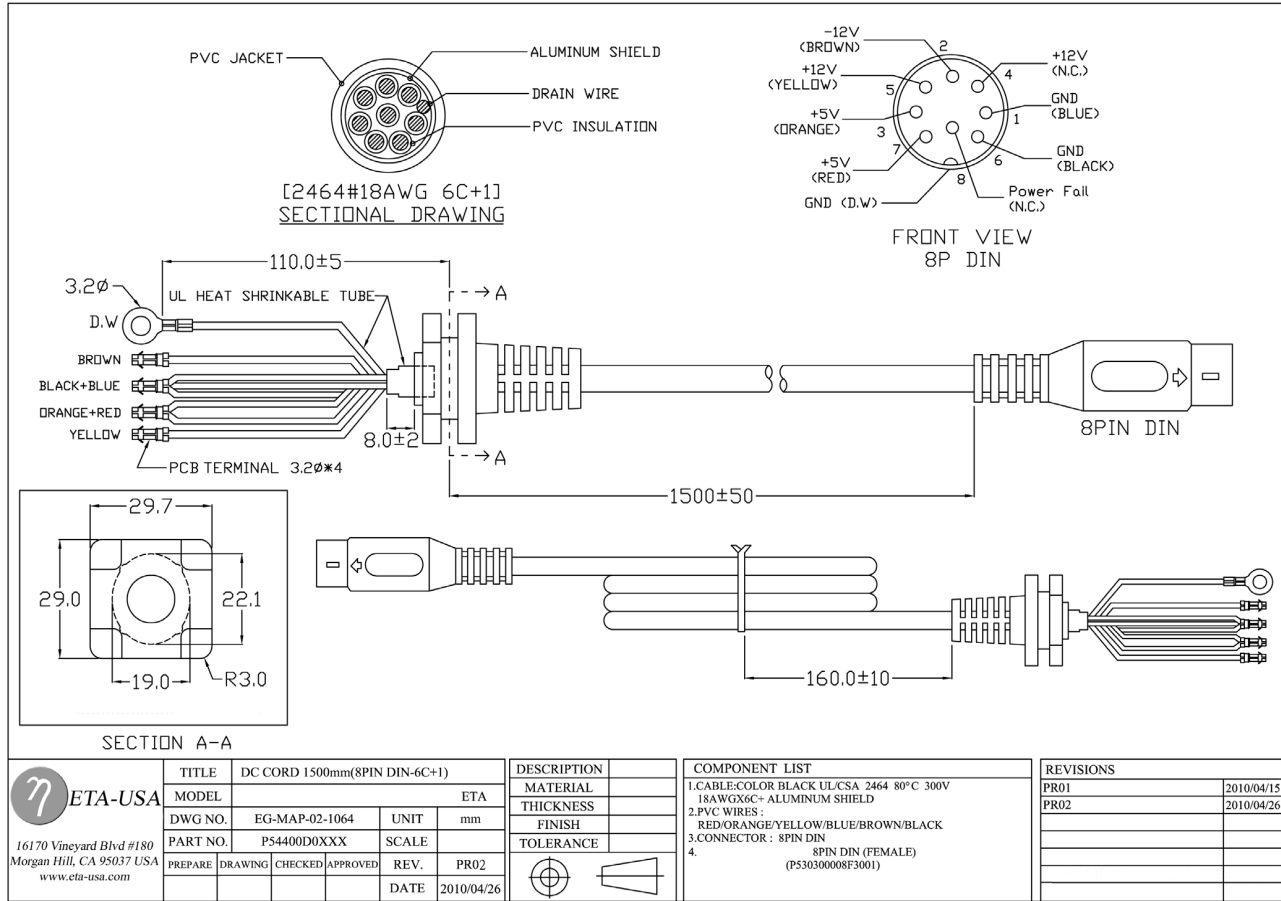
150W





Dimensions Diagrams

150W



EG-B2C010 REV.B

