



DTD120-SX-F-W6

120W External Power Supply



FEATURES

- 3-pole IEC320-C14 AC inlet, Class I
- Output voltage range from +12V to +48V
- Meet Efficiency Level VI & CoC V5 Tier 2 requirements
- No load Power consumption < 150mW
- Power ON LED indicator
- **3 year warranty**

Output voltage and constant current level can be adjusted through potential meter. Constant current level adjustable through output cable with 1~10Vdc.

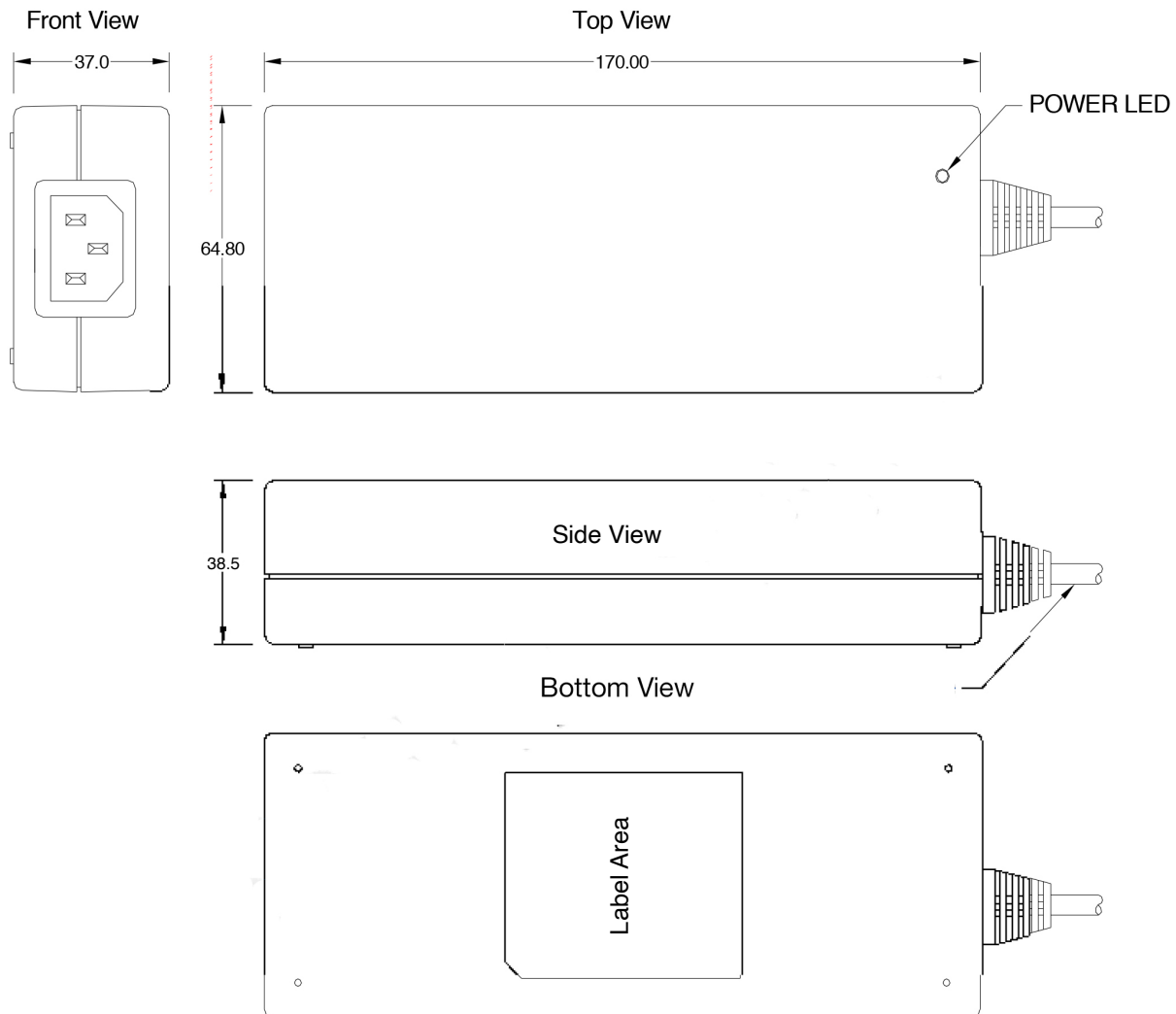


MODEL/CHANNEL		Unit	DTD120-12SX-F-W6	DTD120-19SX-F-W6	DTD120-24SX-F-W6	DTD120-28SX-F-W6	DTD120-48SX-F-W6	
OUTPUT	Norminal Voltage	V	12	19	24	28	48	
	Norminal Current	A	8.33	6.3	5	4.3	2.5	
	Output Regulation	A	5	5	5	5	5	
	Output Power	W	100	120	120	120	120	
	Ripple & Noise Max	mV	240	240	240	240	240	
	Turn-on Time Typ.	ms	800 (AC IN 100V, Io=100%)					
INPUT	Input Voltage Range	V	90-264VAC					
	Frequency	A	47-63Hz					
	Input Current(rms)	%	2A @ 90Vac; 1A @ 264Vac max					
	Power factor	-	>0.9(20%~100%Load)					
	Efficiency	%	<89% @ full load, 115VAC					
	CEC	%	No load power consumption <0.3 W @240 VAC					
Protection	Short circuit protection	V	Auto Recovery					
	Over Voltage Protection	A	AC Recycle					
Environmental Agencies	Safety Standards	-	CISPR 22 Class B,FCC Part 15 Class B,EN 55022 Class B, EN 61000-3-2 Class D, EN 55024, CE					
	EMC Standards	-	UL 60950 CSA 22.2-No.60950-1 TUV EN60950-1 CB IEC 60950-1 PSE J60950 CCC					
Environment	Operating temp. & Humidity	-	0 to +40°C					
	Storage temp. & Humidity	-	-10 to +70°C					
	MTBF demonstrated	-	>80'000 hours at full load and 25 °C ambient temperature					
Dimension	Size(LxWxH) / Weight	mm/g	L170xW64.8xH37mm					





MECHANICAL SPECIFICATION AC/DC Switching Adapter - Single Output



Note:

1. AC Inlet : IEC320-C14
2. Plastic Case Color : Black
3. Tolerance : $\pm 0.5\text{mm}$
4. Unit : mm

STANDARD OUTPUT CABLE

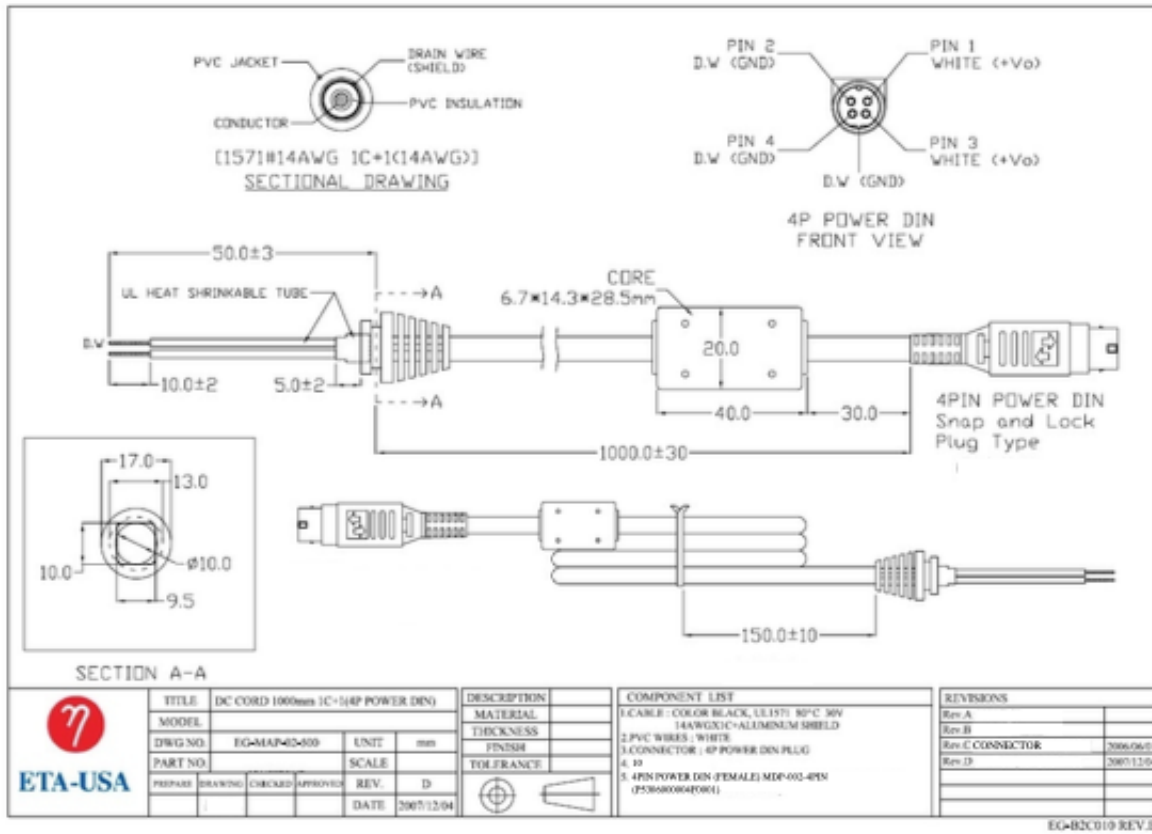
1. AWM 1571 # 14 AWG / 1C + SHIELDING, UL 80°C 30V VW-1, 1050 mm.
2. AWM 1185 # 16 AWG / 1C + SHIELDING, UL 80°C 300V VW-1, 1050 mm.
3. Depends on customers requirements.





DTD-SX-F-W6- Drawings

120W



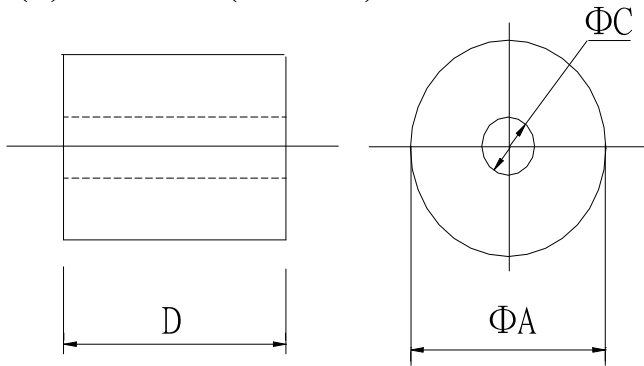


DTD-SX-F-W6 Drawings

120W

ITEM: K5A RH 14.2X7.2X28.5

(1) DIMENSION (Unit: mm)



A	14.20	$\begin{matrix} + \\ - \end{matrix}$	0.40	mm
C	7.20	$\begin{matrix} + \\ - \end{matrix}$	0.30	mm
D	28.50	$\begin{matrix} + \\ - \end{matrix}$	0.80	mm

(2) ELECTRICAL REQUIREMENTS:

Z	100	- 0	Ω	TEST FREQ	25 MHz
Z	150	- 0	Ω	TEST FREQ	100 MHz
COIL DATA	Qo=		PF	TEST FREQ	
	Lo=				
Winding	0.65	Φ	X	100 mm	2U. E. W 1 TS

