



# ETA-USA

The Power Professionals

## AOPS30

## 30W AC/DC



### Features

- Inrush Current Limit
- Wide Input voltage range Universal input
- Over voltage protection
- Overcurrent protection
- 4 Yr warranty**



MODEL/CHANNEL		Unit	AOPS30-3.3	AOPS30-5	AOPS30-9	AOPS30-12	AOPS30-15	AOPS30-24	AOPS30-48	
<b>OUTPUT</b>	Nominal Voltage	V	3.3	5	9	12	15	24	48	
	Current	A	6	6	3.4	2.5	2	1.3	0.63	
	Rated Power	W	20	30	31	30	30	31	30	
	Line Regulations	mV	25	25	45	60	75	120	240	
	Load Regulations	mV	50	50	90	120	150	240	480	
	Temperature Drift	mV	50	75	135	180	225	360	720	
	Ripple & Noise(pk-pk) (*1)	mV	80	80	120	120	150	150	250	
	Ripple	mV	50	50	90	120	120	120	150	
	Turn-on Time typ.	ms	600max (AC IN 100V, Io=100%)							
	Hold-up Time typ.	ms	17 (AC IN 100V, Io 100%)							
<b>INPUT</b>	Voltage, Frequency	V	AC100-240V(AC88~264VAC) 50/60Hz(47 – 440) or DC240-370V (User selectable)							
	Current Typ. 110V	A	0.6	0.8 @Typ=100%						
	220V		0.3	0.4 @Typ=100%						
	Efficiency Typ. 110V	%	67	72	77	78	78	80	80	
220V	66		73	76	77	77	80	80		
Inrush Current Typ. 110V	A	20A Typ( AC IN 110V, LO=100%, 40A TYP (AC IN 220V, LO-100%, Cold Start )								
220V										
<b>Function</b>	Over Voltage Protection	V	Works at over 115~140% of rating							
	Over Current Protection(*2)	A	Works at over 105%							
	Remote Sensing	-	Available							
	Remote ON.OFF	-	Available							
	Cooling /O.T.P	-	Convection cooling							
<b>Electrical Isolation</b>	(1) Input - Output	-	AC 3 KV 1min., cut-off: 20mA / DC 500V 100 MO							
	(2) Input - F.G	-	AC 1.5 KV1min., cut-off: 20mA / DC 500V 100 MO							
	(3) Output - F.G	-	AC 0.5 KV 1min., cut-off: 100mA / DC 500V 100 MO							
<b>Environment</b>	Operating temp. & Humidity	-	-10 ~+70°C with derating. 20~90% RH (NON condensing)							
	Storage temp. & Humidity	-	-20 ~+75°C. 20~90% RH (NON condensing)							
	Vibration	-	10~55Hz @ 1 G 3 minutes PERIOD, 30 minutes along X,Y & Z axis							
	Impact	-	10G for 20ms once on each X, Y, and Z axis							
<b>Dimension</b>	Size(WxLxH) / Weight	mm/g	99Wx82Lx36H/ 200g							
<b>Safety</b>	CB, CE	-	Approved							
<b>Emission</b>	Conducted Emission	-	Compiles with-EN55022-A, VOCI- A, CISPR22A, FCC Class A							



# ETA-USA

16170 Vineyard Blvd. Suite 180 Morgan Hill, CA 95037 <http://www.eta-usa.com>

Toll-free (US only): 800-ETA-POWR (800-382-7697) Telephone: 408 778-2793 FAX: 408-779-2753

©2014 ETA-USA All Rights Reserved

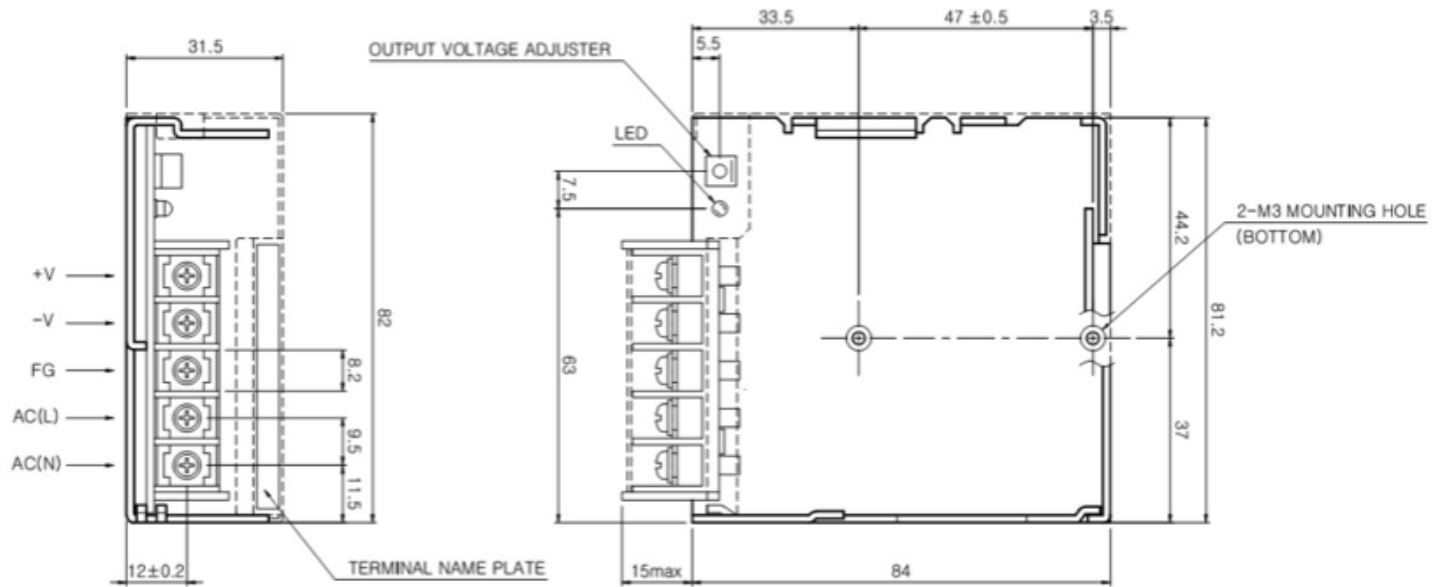
ETA-USA reserves the right to make changes to the products and specifications without prior notice. Please contact the factory for latest information.



# ETA-USA

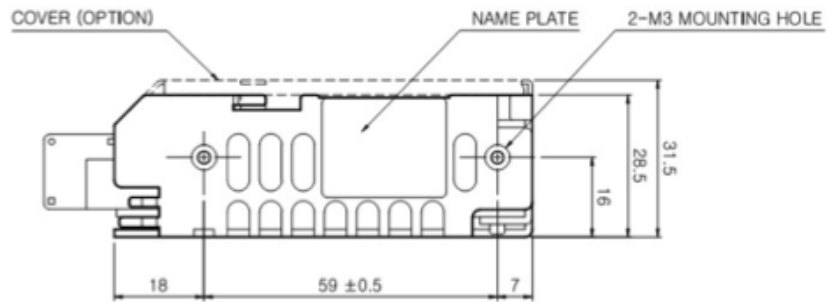
The Power Professionals

## Dimension Diagram



※ NAME PLATE : CSF30 Series

- \* Weight : 210g
- \* Tolerance : ±1
- \* Dimensions in mm



# ETA-USA

16170 Vineyard Blvd. Suite 180 Morgan Hill, CA 95037 <http://www.eta-usa.com>  
Toll-free (US only): 800-ETA-POWR (800-382-7697) Telephone: 408 778-2793 FAX: 408-779-2753

©2014 ETA-USA All Rights Reserved

ETA-USA reserves the right to make changes to the products and specifications without prior notice. Please contact the factory for latest information.