



DTL-SX-W

60W



Features

- Meets Energy Star efficiency level VI
- 3-pole IEC320-C14 AC inlet class I
- No load power consumption <210mW
- Power ON LED indicator
- Short Circuit Protection
- Over-load Protection
- Over voltage protection
- 3 year warranty
- * For 15W

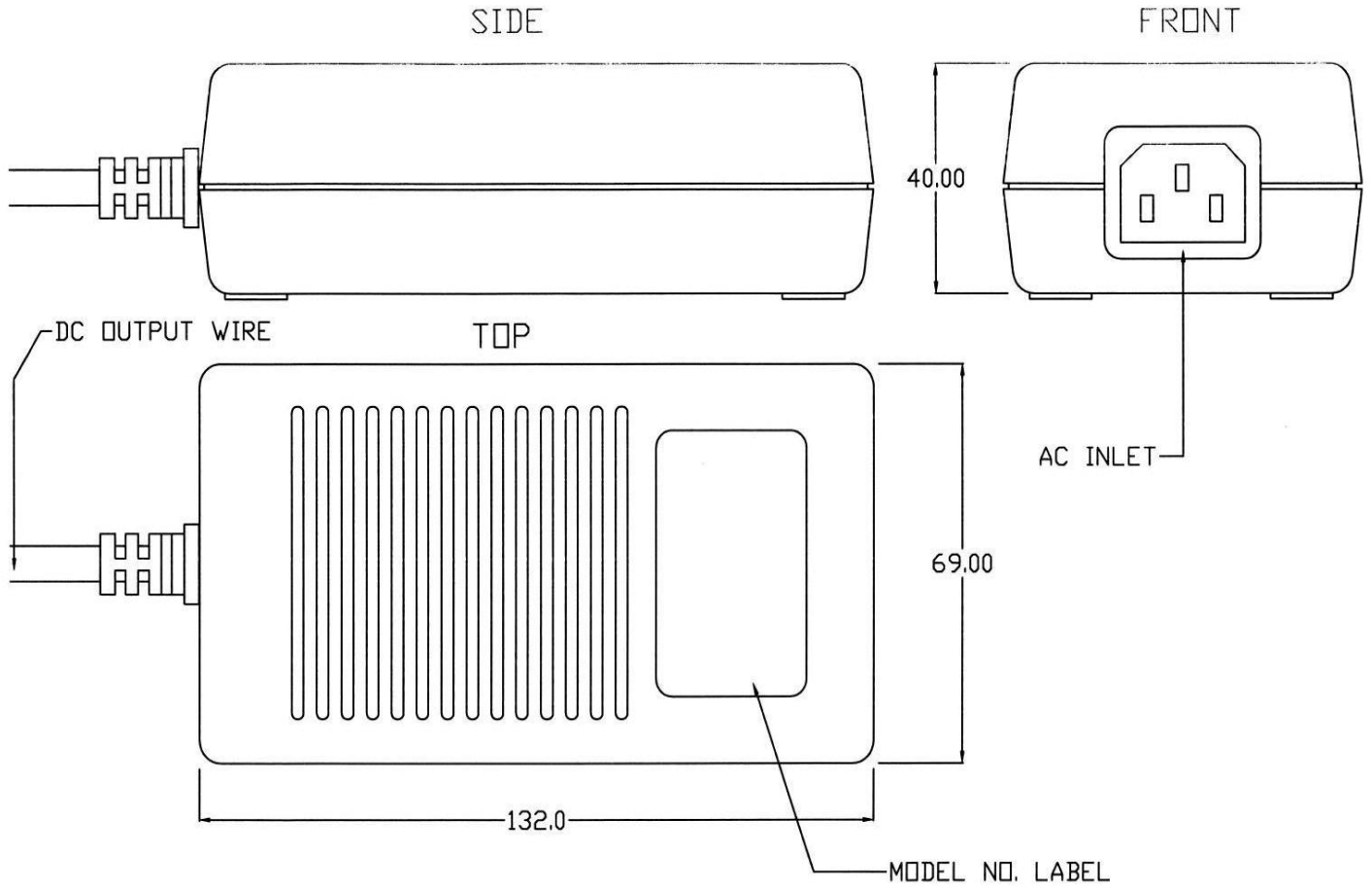


MODEL/CHANNEL		Unit	DTL65-12SX-W6	DTL65-14SX-W6	DTL65-15SX-W6	DTL65-16SX-W6	DTL65-17SX-W6	DTL65-18SX-W6
OUTPUT	Norminal Voltage	[V]	12	14	15	16	17	18
	Norminal Current	[A]	5	4.2	4	3.8	3.5	34
	Ripple & Noise Max	[mV]	200	140	150	160	170	180
MODEL/CHANNEL		Unit	DTL65-19SX-W6	DTL65-20SX-W6	DTL65-21SX-W6	DTL65-22SX-W6	DTL65-23SX-W6	DTL65-24SX-W6
OUTPUT	Norminal Voltage	[V]	19	20	21	22	23	24
	Norminal Current	[A]	3.2	3	2.9	2.7	2.6	2.5
	Ripple & Noise Max	[mV]	190	200	210	220	230	240
	Output Regulation	[A]	±5%					
	Hold Up Time	[ms]	>10ms typical at full load @ 115					
INPUT	Input Voltage Range	[V]	90-264VAC 115/230V Full Range; 50/60Hz					
	Frequency	[A]	47-63Hz					
	Input Current(rms)	[%]	2A @ 90Vac; 1A @ 264Vac max.					
	Power factor	-	>0.9(115VAC100%Load)					
	Efficiency	%	>75% 115VAC at full load					
	Inrush Current	[A]	<30A peak @ 115VAC, <60A peak @ 264VAC					
Environmental Agencies	Safety Standards	-	UL 60950-1 CSA 22.2-No. 60950-1 TUV EN60950-1 FCC Class B CE CISPR22 Class B EN55022 Class B PSE: Just the 15V(DTL60-15SX-W) has PSE approval					
Environment	Operating temp. & Humidity	-	0°C to 40°C, derate linearly 2.5% per °C from 41°C to 60°C					
	Storage temp. & Humidity	-	-10°C to +70°C					
	Humidity	-	20% ~ 90%					
	MTBF demonstrated	-	> 80,000 hours at full load and 25°C ambient temperature.					
	Short circuit protection	-	Auto Recover					
	Over Load Protection	-	Auto Recover					
Dimension	Over Voltage Protection	-	Shutdown and latch off, AC Recycle					
	Size(WxHxD) / Weight	mm/g	132(L) x 69(W) x 40(H)mm ±0.5mm tolerance (5.2" x 2.72 x 1.57")/0.46kg (1.01 lb)					





Mechanical Drawing

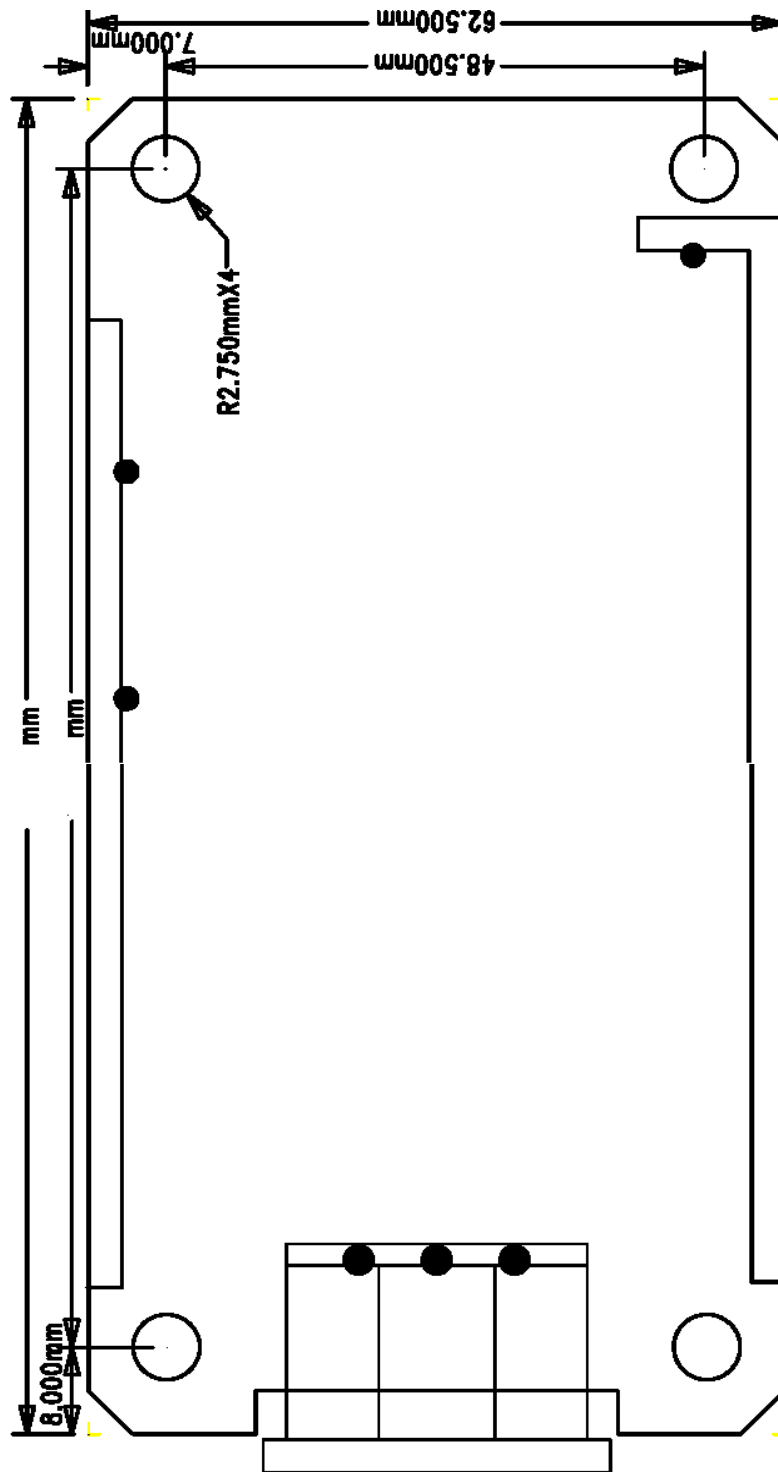




ETA-USA

The Power Professionals

Inside Casing



ETA-USA

16170 Vineyard Blvd. Suite 180 Morgan Hill, CA 95037 <http://www.eta-usa.com>
Toll-free (US only): 800-ETA-POWR (800-382-7697) Telephone: 408 778-2793 FAX: 408-779-2753