

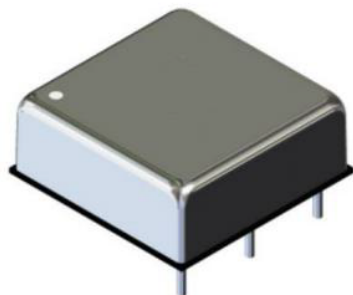


# ETA-USA

The Power Professionals

## ODC75 SC/WC

## 75W DC/DC



### Features

- 4:1 Wide input range VDC
- Isolation 1500VDC
- Efficiency up to 88%
- Wide operating temperature from -40°C to +80°C
- EMI class A without external circuit
- No minimum load required- Soft Start
- Meet EN55022, EN55024
- Available Inputs Voltage(nominal):
- 24 VDC Nom (DC9~ 36V)
- 48 VDC Nom (DC 18 ~ 75V)
- -ODC75-22WC    •-22: 12V, 12V
- -ODC75-23WC    •-22: 15V, 15V
- **2 Year Warranty**

### RoHS

MODEL/CHANNEL		Unit	ODC75-12SC24	ODC75-15SC24	ODC75-22WC24	ODC75-23WC24
<b>OUTPUT</b>	Nominal Voltage	V	12	15	+/-12	+/-15
	Current	A	6.25	5	+/-3.125	+/-2.5
	Efficiency Typ.	%	85	86	86	86
	Load Regulations	%	+/-1%		+/-2%	
	Operating Frequency	KHZ	60			
	Transient Res	µs	300			
	Line Regulations	%	+/-1%			
	Total Power	W	75			
<b>INPUT</b>	Voltage, Frequency	V	DC 24V (9~36)			
	Current Typ.	A	3680-3635			
	Voltage Surge    24VDC 48VDC	VDC	Max. 50VDC Max. 100VDC			
	Input Voltage	-	≤5V/m			



# ETA-USA

16170 Vineyard Blvd. Suite 180 Morgan Hill, CA 95037 <http://www.eta-usa.com>  
Toll-free (US only): 800-ETA-POWR (800-382-7697) Telephone: 408 778-2793 FAX: 408-779-2753

©2014 ETA-USA All Rights Reserved

ETA-USA reserves the right to make changes to the products and specifications without prior notice. Please contact the factory for latest information.



# ETA-USA

The Power Professionals

## ODC75 SC/WC

MODEL/CHANNEL		Unit	ODC75-12SC48	ODC75-15SC48	ODC75-22WC48	ODC75-23SC48
<b>OUTPUT</b>	Nominal Voltage	V	12	15	+/-12	+/-15
	Current	A	6.25	5	+/-3.125	+/-2.5
	Efficiency Typ.	%	85	86	86	86
	Load Regulations	%	+/-1%		+/-2%	
	Operating Frequency	KHZ	60			
	Transient Res	μs	300			
	Line Regulations	%	+/-1%			
	Total Power	W	75			
MODEL/CHANNEL		Unit				
<b>INPUT</b>	Voltage, Frequency	V	DC 48V (18~75)			
	Current Typ.	A	1840-1820			
	Voltage Surge 24VDC 48VDC	VDC	Max. 50VDC Max. 100VDC			
	Input Voltage	-	≤5V/m			
MODEL/CHANNEL		Unit	ODC75-SC/WC24	ODC75-SC/WC48		
<b>Function</b>	Case Material Potting Material	-	Nickel Coated Copper with non-Conductive Base - Case Temp. 100°C Base Plate Material -Non-Conductive FR4; Potting material Epoxy UL94V-0 Pin: Brass Solder Coated Thermal Shutdown 105~115 case			
	Overload Protection	A	≥ 110% full load			
	Short Circuit Protection	-	AUTO RECOVERY			
	Over voltage Protection	-	ZENER DIODE CLAMP			
	Isolation	-	1500 VDC or 3000VDC			
	Cooling /O.T.P	-	Convection			
	Resistance	-	≥ 1000 MΩ(500VDC)			
	Capacitance	-	Typ. 1800pF			
<b>Environment</b>	Operating temp. & Humidity	-	-40 ~ +80°C			
	Storage temp. & Humidity	-	-55 ~ +115°C			
	MTBF	-	>500 x 1000 MIL-HDBK-217F			
<b>Dimension</b>	Size(WxLxH) / Weight	in/g	3x2.6x0.83/212g			
	<b>Safety</b>	-	ROHS			
	<b>Emission</b>	-	Conducted Emission EMS EN55022, EN55024;EMC CE CLASS B Perf. Criteria A			



# ETA-USA

16170 Vineyard Blvd. Suite 180 Morgan Hill, CA 95037 <http://www.eta-usa.com>  
Toll-free (US only): 800-ETA-POWER (800-382-7697) Telephone: 408 778-2793 FAX: 408-779-2753

©2014 ETA-USA All Rights Reserved

ETA-USA reserves the right to make changes to the products and specifications without prior notice. Please contact the factory for latest information.

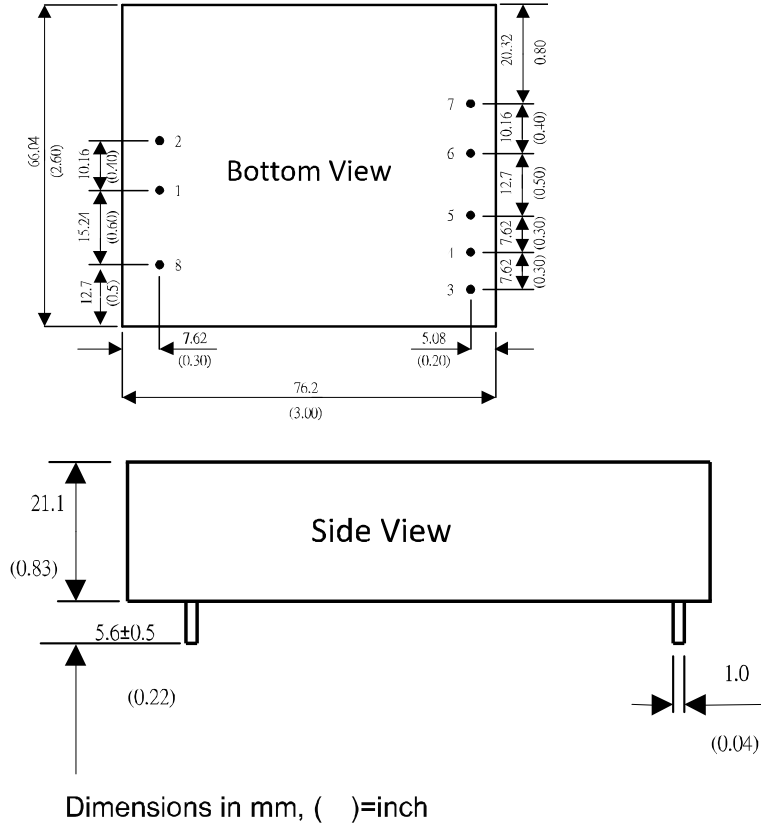


# ETA-USA

The Power Professionals

## Dimensional Drawing (mm)

### DIMENSIONAL DRAWING (mm)



# ETA-USA

16170 Vineyard Blvd. Suite 180 Morgan Hill, CA 95037 <http://www.eta-usa.com>  
Toll-free (US only): 800-ETA-POWER (800-382-7697) Telephone: 408 778-2793 FAX: 408-779-2753

©2014 ETA-USA All Rights Reserved

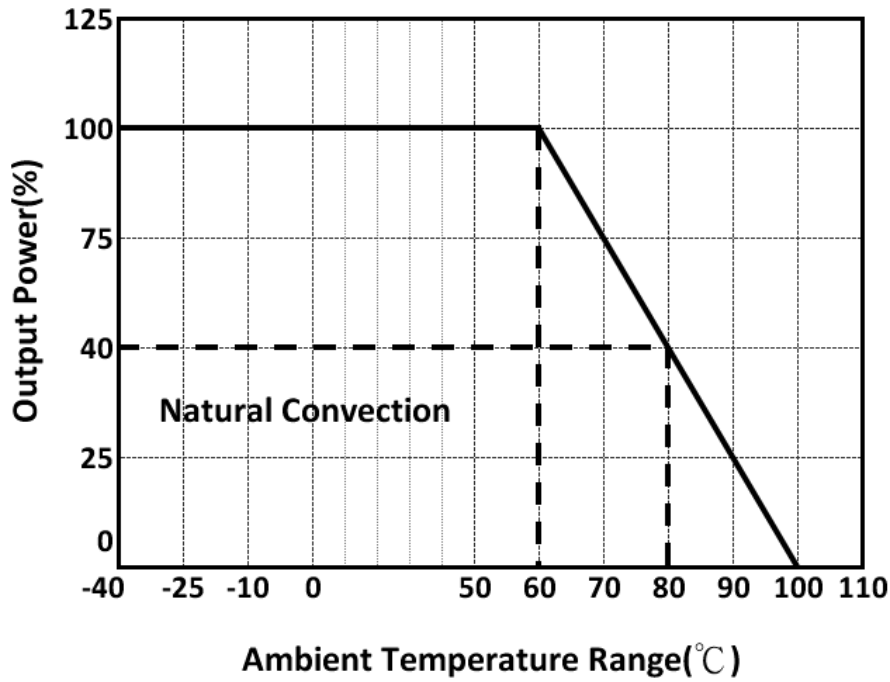
ETA-USA reserves the right to make changes to the products and specifications without prior notice. Please contact the factory for latest information.



# ETA-USA

The Power Professionals

## External Output



# ETA-USA

16170 Vineyard Blvd. Suite 180 Morgan Hill, CA 95037 <http://www.eta-usa.com>  
Toll-free (US only): 800-ETA-POWR (800-382-7697) Telephone: 408 778-2793 FAX: 408-779-2753

©2014 ETA-USA All Rights Reserved

ETA-USA reserves the right to make changes to the products and specifications without prior notice. Please contact the factory for latest information.