

DTB47-3X-W

GENERAL SPECIFICATION

This specification describes the performance characteristics of a grounded, single phase, 47 watts, 3 output level adapter power supply.



1) INPUT

Description	Min.	Typical	Max.	Condition
Input Voltage	90VAC	110/220V	264VAC	Full Range; 50/60Hz
Input Current	1.0A MAX. (RMS)			
INRUSH CURRNET	30A MAX. (COLD START AT MAX. LOAD & 110VAC 60A MAX. (COLD START AT MAX. LOAD & 220VAC INPUT)			
Line Frequency	47Hz	50/60Hz	63Hz	-
Efficiency	-	-	70%	AC normal input & the Maximum load

2) OUTPUT

+5V/7A; +12V/1.5A; -12V/0.3A; TOTAL OUTPUT: 47W MAX.

2.1) STATIC DC LOAD & RIPPLE NOISE

NOMINAL VOLTAGE	LIMIT		AVERAGE LOAD		RIPPLE & NOISE
	MIN.	MAX.	MIN.	MAX.	
V1 +5V	4.85V	5.25V	1.0A	7.0A	50mV
V2 +12V	11.40V	12.60V	0.1A	1.5A	120mV
V3 -12V	-10.80V	-13.20V	0.01A	0.3A	120mV

NOTE: 20MHz bandwidth ripple & noise is measured by using 0.1uF C.C. & 10uF/50V E.C. bypassed at the output connector.

2.2) HOLD UP TIME

The power supply unit should maintain its proper voltage within voltage specifications for at least 10 mS after losing input power under the condition of 115VAC (or 230VAC) input voltage and max. output load.

3) PROTECTION:

3.1) OVER VOLTAGE PROTECTION (OVP)

If any over voltage occurs, the power supply should latch off before any output exceeds its limit below.

NOMINAL VOLTAGE (V)	OVERVOLTAGE RANGE (V)	
	FROM	TO
+5	5.6	6.5

The power supply will be automatically recovered after the over voltage fault being removed.

3.2) SHORT CIRCUIT PROTECTION

Short circuit occurred on +5V, +12V output should not cause any damage to the power supply but shut down the power supply. The power supply will be automatically recovered after the short circuit being removed.

3.3) OVERLOAD PROTECTION.

An over load protection will be effected when overloading reaches +160% MAX the power supply will be automatically recovered after the overload being removed.

4) ENVIRONMENT:

4.1) OPERATING:

Temperature: 0 to 40 degree centigrade
Relative Humidity: 20 to 90 percent, non-condensing

4.2) SHIPPING AND STORAGE:

Temperature: -25 to +85 degree centigrade
Relative Humidity: 20 to 90 percent, non-condensing

5) SAFETY PROVIDED

UL 1950
CSA 22.2
TUV EN60950
CE EN55022 PART 15 class "B"
FCC CERTIFICATE

5.1) DIELECTRIC WITHSTAND

Primary to Secondary: 3000VAC for 60 Sec.
Primary to Frame Ground: 1500VAC for 60 Sec.
Secondary to Ground: 500VAC for 60 Sec.



5.2) INSULATION RESISTANCE

Primary to Frame Ground: 50m OHM 25A MAX.

6) RELIABILITY

MTBF: 50000 hours min. at max. load for 25 degree centigrade ambient temperature.

7) BURN-IN TEST: 100% burn-in tested at max. load under 40 +/- 5 degree centigrade

8) MECHANICAL REQUIREMENT

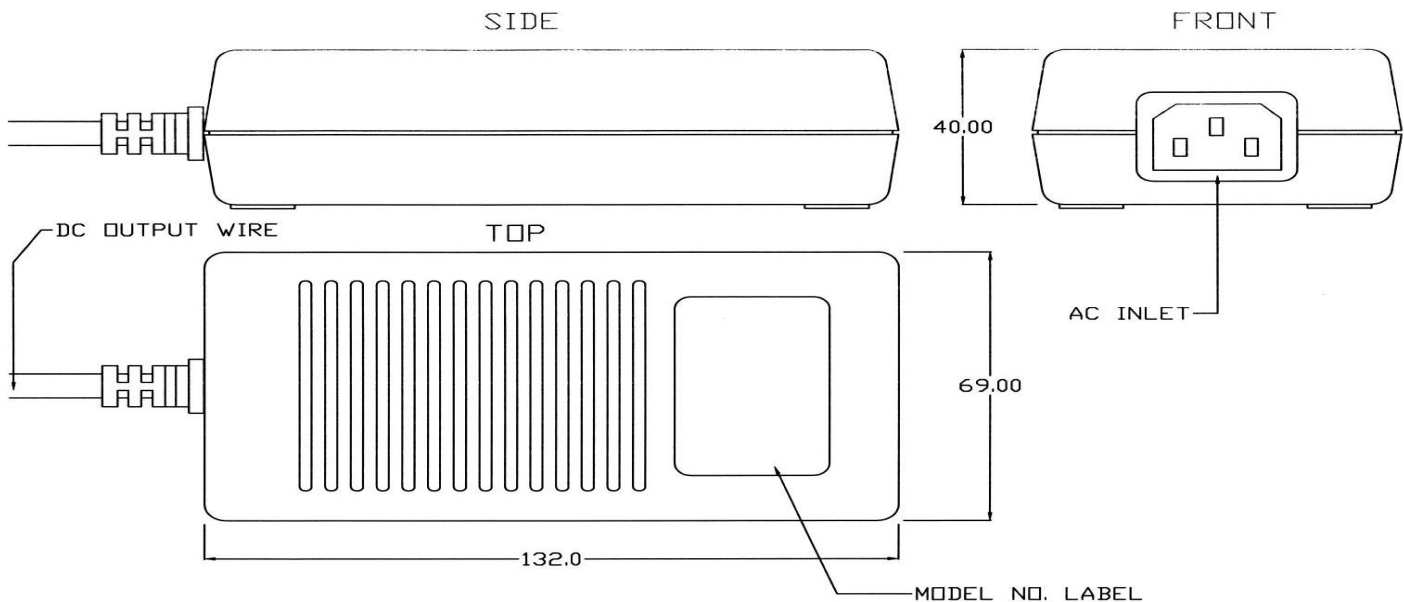
8.1) CASE DIMENSION: 132(L) mm * 69(W) mm * 40(H) mm.

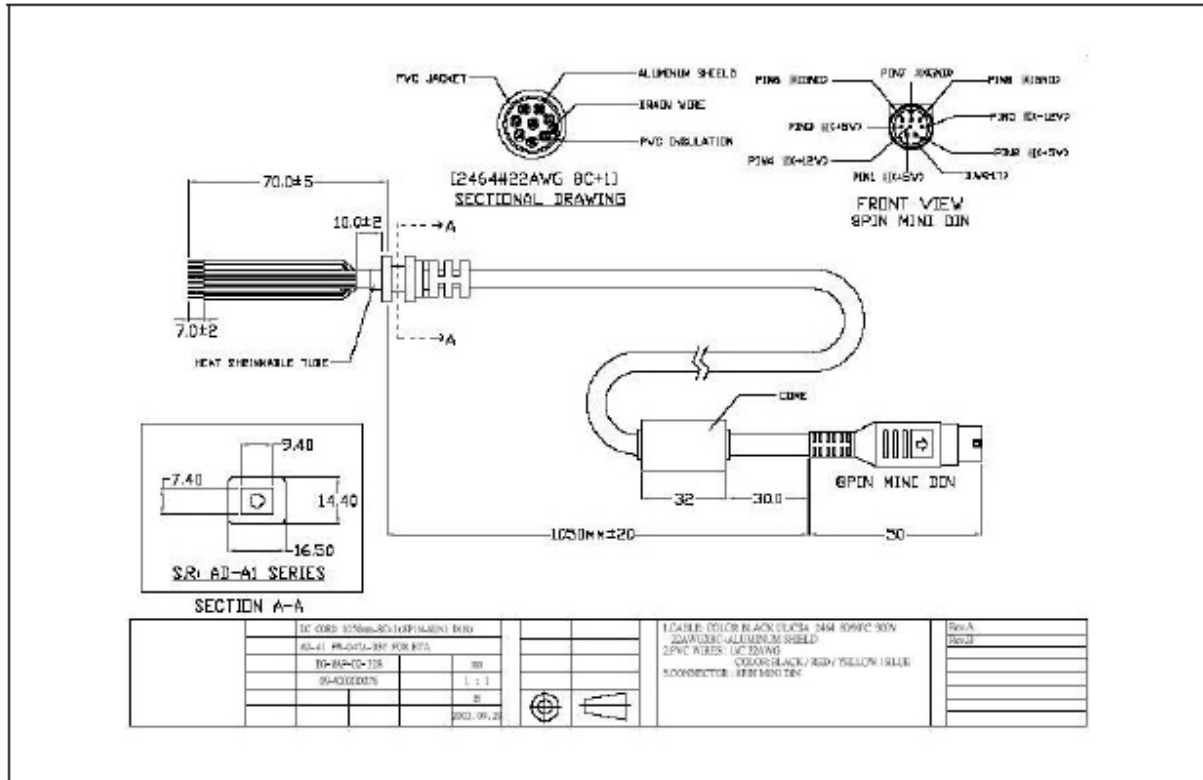
8.2) OUTPUT CONNECTOR: DEPENDS ON YOUR REQUIREMENTS

OUTPUT CABLE LENGTH: 1500 ± 50mm

OUTPUT CONNECTOR: 8P DIN

INPUT CONNECTOR: IEC320-C13 (3 pins)

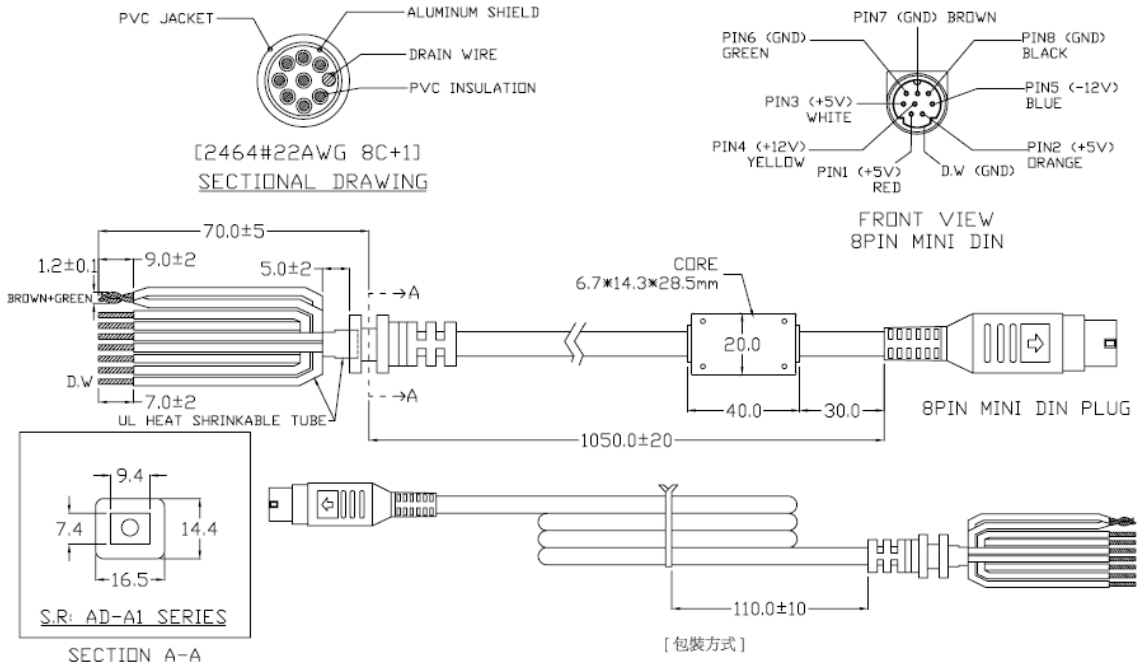






ETA-USA

HIGH QUALITY SWITCHING POWER SUPPLIES



D-600
MAP-691- DTB47-3X

ETA-USA
Sub.ETA ELECTRIC IND., CO. LTD.
16170 Vineyard Blvd. #180
Morgan Hill, CA 95037
Phone: (408) 778-2793 Fax: (408) 779-2753
www.eta-usa.com