

27 WATT

SINGLE OUTPUT SWITCHING ADAPTER

DTA27-SX-W SERIES

GENERAL SPECIFICATION

This specification describes the performance characteristics of a single phase 27 Watts, Single Output Switching Adapter.



1) INPUT

Description	Min.	Nominal	Max.	Condition
Input Voltage	90VAC	115/230V	264VAC	Auto Range; 50/60Hz
Input Current(rms)	1A@264Vac 2A@90Vac			
Line Frequency	47Hz	50/60Hz	63Hz	-
Efficiency	>80% 115VAC at full load (DC Conversion)			
EMI: FCC Class B; CISRP22 Class B; EN 55022 Class B				

2) OUTPUT

2.1) *Voltage Regulation: ±3%

***Hold up time:** 10ms typical at full load @ 115VAC

***Current Limit:** ±3%

Model Name		Nominal Voltage	Max. Power	Output Current		Ripple & Noise
AC INLET 2PIN	AC INLET 3PIN			MIN.	MAX.	
DTA27-09SX-W-2	DTA27-09SX-W-3	9	27W	0.0A	3.0A	90mv
DTA27-10SX-W-2	DTA27-10SX-W-3	10	27W	0.0A	2.7A	100mv
DTA27-11SX-W-2	DTA27-11SX-W-3	11	27W	0.0A	2.45A	110mv

NOTE: 1. Peak to Peak with 20MHz bandwidth and 10uF in parallel with a 0.1uF capacitor.

3) PROTECTION:

- **OVER VOLTAGE PROTECTION(OVP)**

- **AC RECYCLE SHORT CIRCUIT PROTECTION**
- **OUTPUT SHORT CIRCUIT PROTECTION(0.03 OHM)**
- **AUTO RECOVERY**

4) ENVIRONMENT

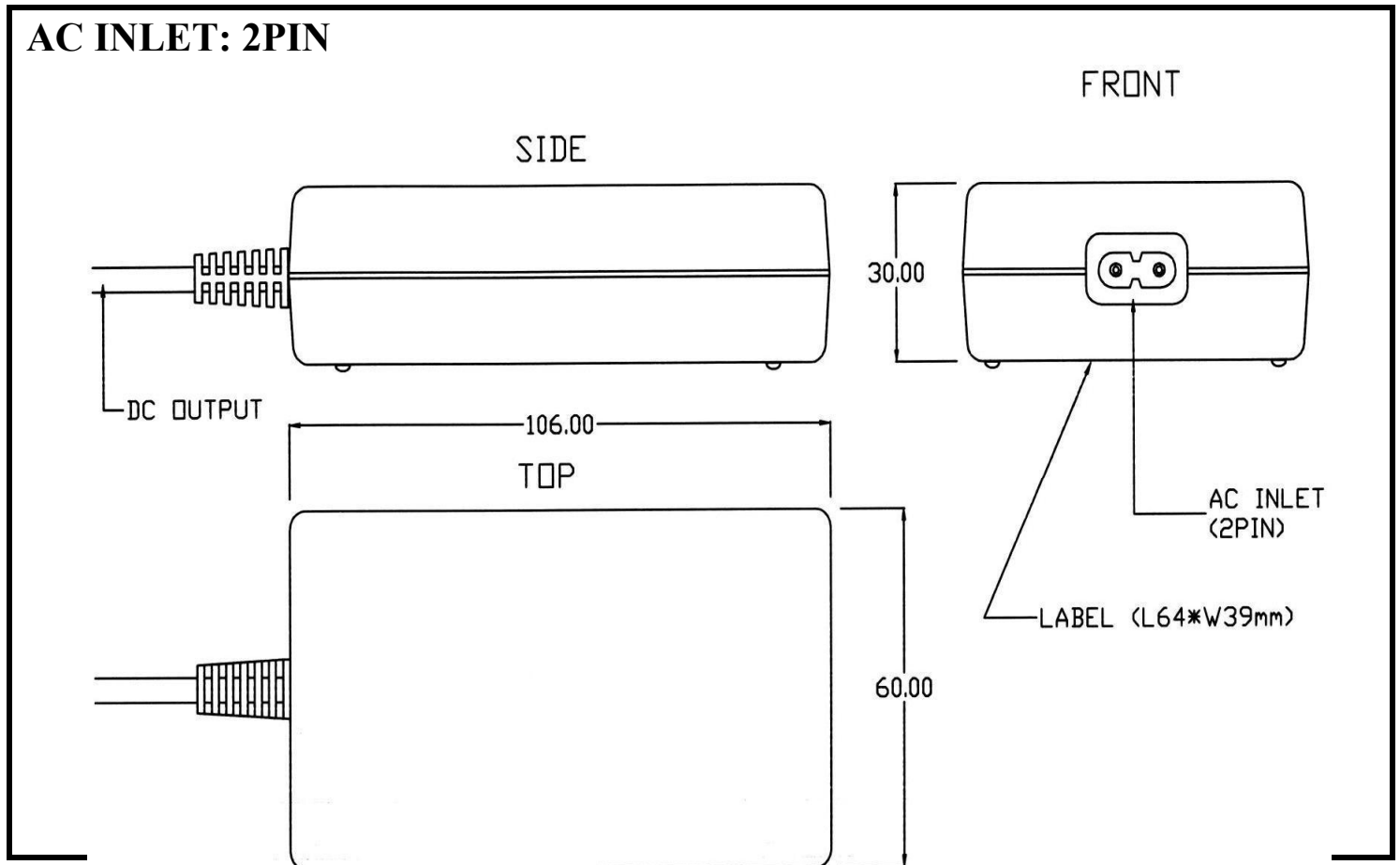
Operating Temperature 0°C to 40°C
Storage Temperature -10°C to +70°C
MTBF: 100'000 hours at full load and 25°C ambient temperature.

5) SAFETY REQUIREMENTS

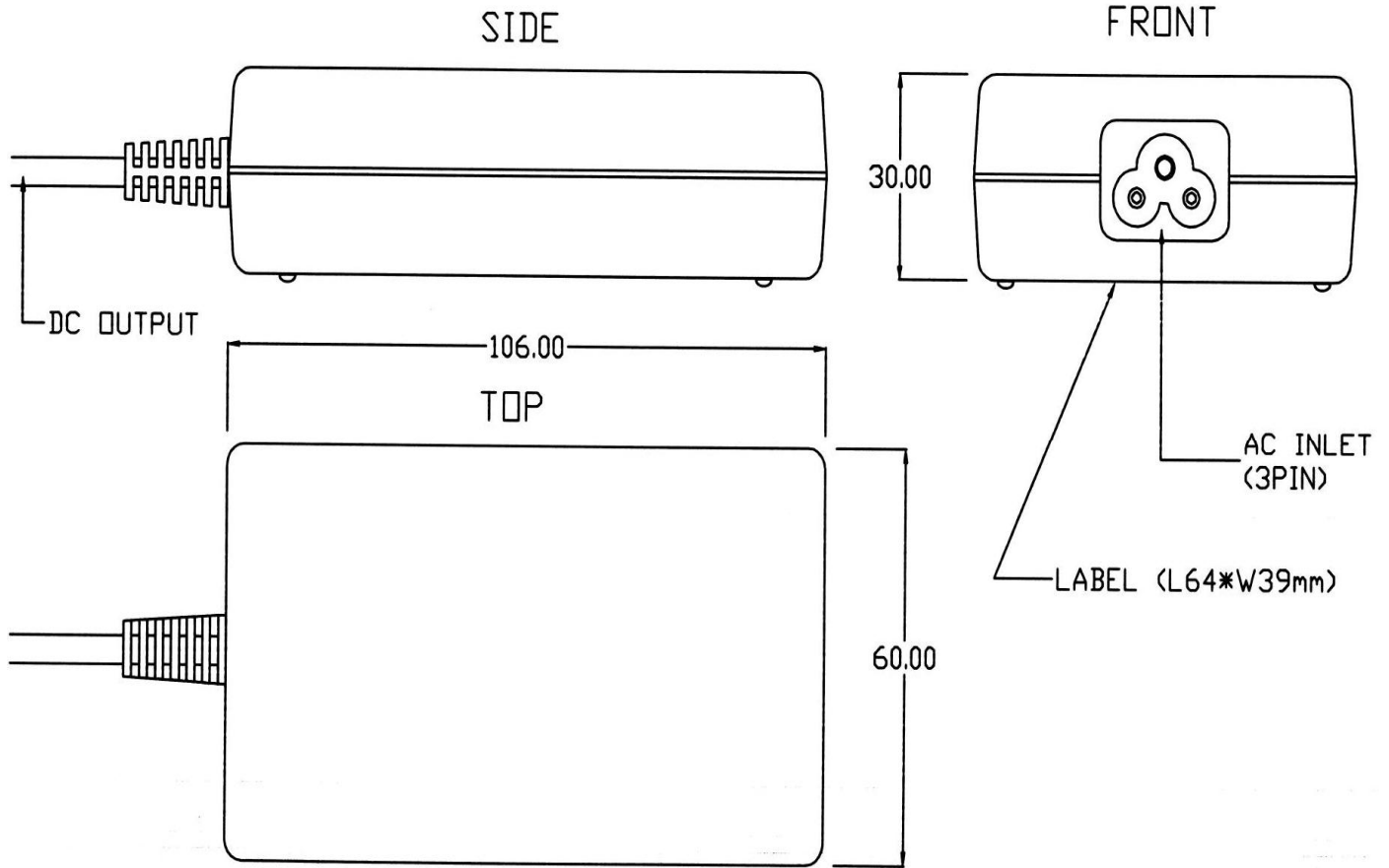
UL 1950
CSA 22.2-234
TUV EN60950
IEC 950
CE: EMC &LVD

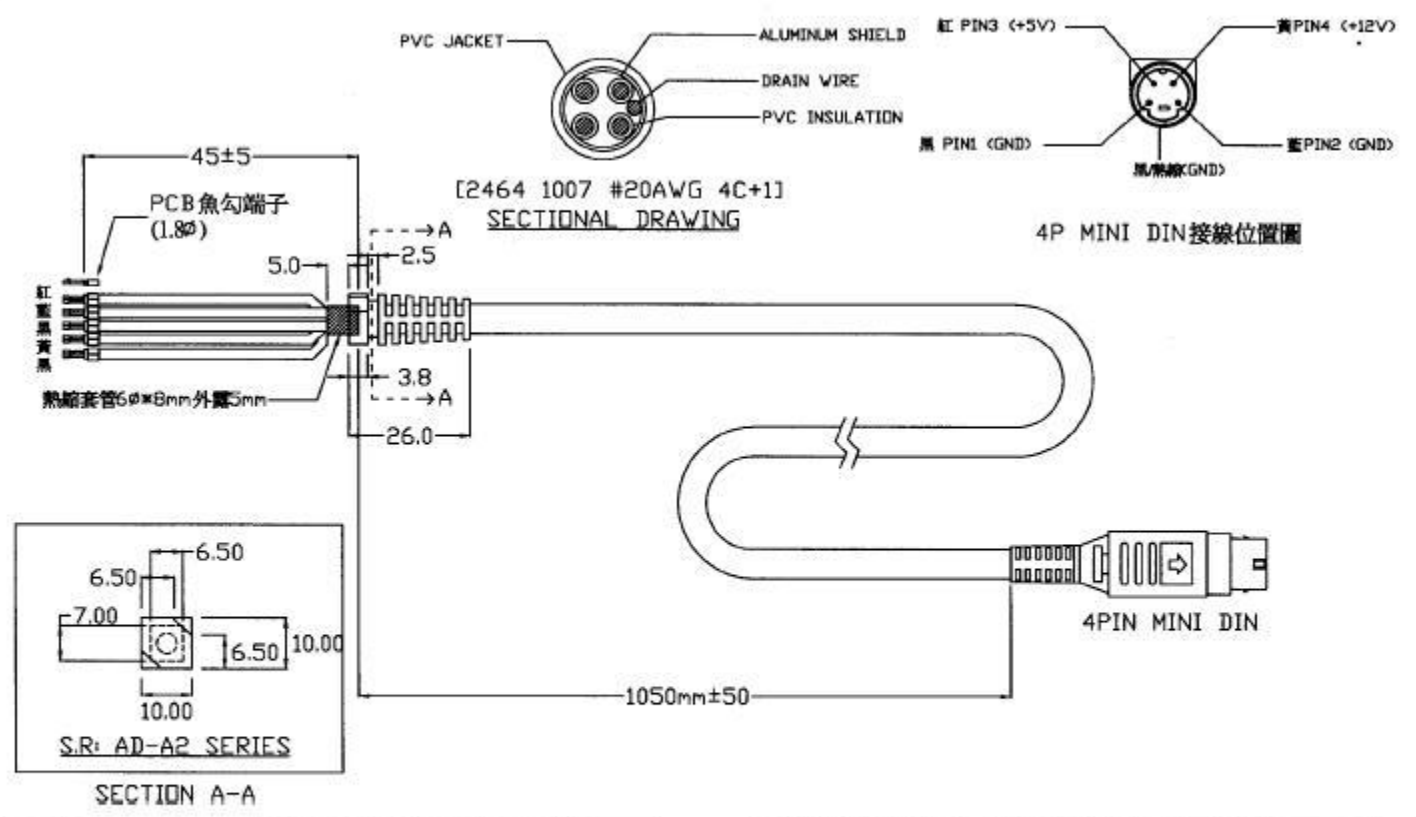
6) DIMENSION DIAGRAM

Dimension: 106(L) × 60(W) × 30(H)mm



AC INLET: 3PIN





		DC CORD 1050mm(4PIN MINI-DIN)			1.CABLE:COLOR BLACK UL/CSA 2464 80/90°C 300V	Rev. D
		AD-A2 LAMBDA			20AWGX4C+ ALUMINUM SHIELD	Rev. E
		B5-MAP-02-70	mm		2.PVC WIRES : UNC COLOR:BLACK / RED / YELLOW / BLUE	
		09-40000047	1 : 1		3.CONNECTOR : 4PIN POWER-DIN	
			II			
			91.12.19			