



MDL-SX-W

60W



**FEATURES:**

- High Reliability
- 100% BURN-IN Tested
- 100% Hi-Pot tested
- Safety Approvals, EMC compliance
- 2-year warranty
- OVP ( Over Voltage Protection ), OPP ( Over Power Protection),
- SCP ( Short Circuit Protection)

**OPTION**

Available with LED (Green) or without (Indicate "L" for LED option)



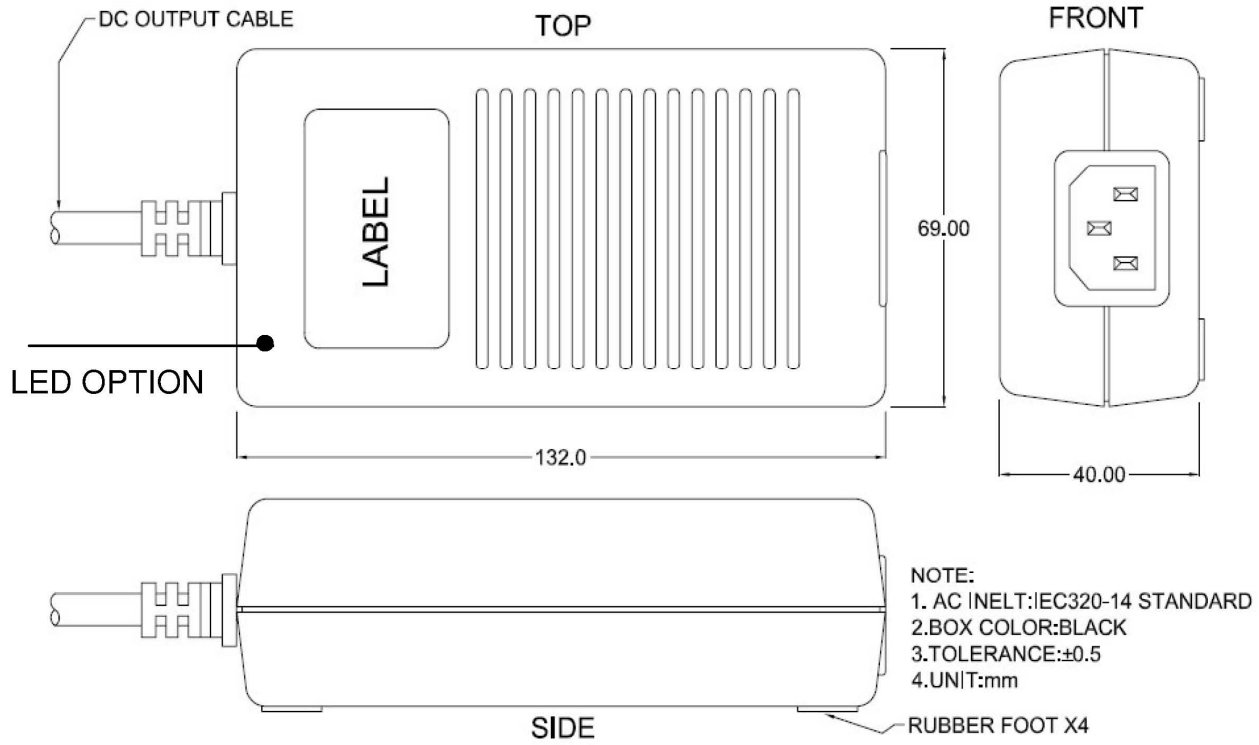
	MODEL/CHANNEL	Unit	MDL60-05SX-W	MDL60-12SX-W	MDL60-15SX-W	MDL60-18SX-W	MDL60-24SX-W	MDL60-36SX-W	MDL60-48SX-W	
<b>OUTPUT</b>	Output Voltage	Vdc	5	12	15	18	24	36	48	
	Output Current	A	8	5	4	3.6	2.7	1.8	1.35	
	Output Power	W	40	60	60	65	65	65	65	
	O/P Regulation	%	5	5	5	5	3	3	3	
	Ripple and Noise(max.) *3	mV	100	100	100	100	100	100	100	
	Line Regulation	%	<1%							
	Hold-up time	mS	>10 ms typical at full load @ 115VAC							
Green Functions	Vac	no load 0.5W @ 230VAC								
<b>INPUT</b>	Input Voltage	Vac	90-264VAC							
	Input Current	A	2A max.							
	Input Frequency	Hz	47-63Hz							
	Efficiency	%	5V>75%@ full load, 115VAC, 12~48V>85%(meet CEC2008)							
<b>Protection</b>	Over Current Protection	-	Auto restart							
	Over Voltage Protection	-	Latch							
	Short Circuit Protection	-	Auto restart							
<b>Environmental Agencies</b>	Safety	-	UL 60601-1 TUV EN60601-1 CB IEC 60601-1							
	EMC Standard	-	FCC Part 18 Class B, EN55011 Class B, EN 60601-1-2, CE							
<b>Environment</b>	Operating Temperature	-	0 to +50°C							
	Storage Temperature	-	-10 to +85°C							
	MTBF demonstrated	-	>100,000 hours at full load and 25°C ambient temperature							
<b>Dimension</b>	Size(WxHxD) / Weight	mm/g	L132xW69xH40mm							





## Dimension Diagram (mm)

60W



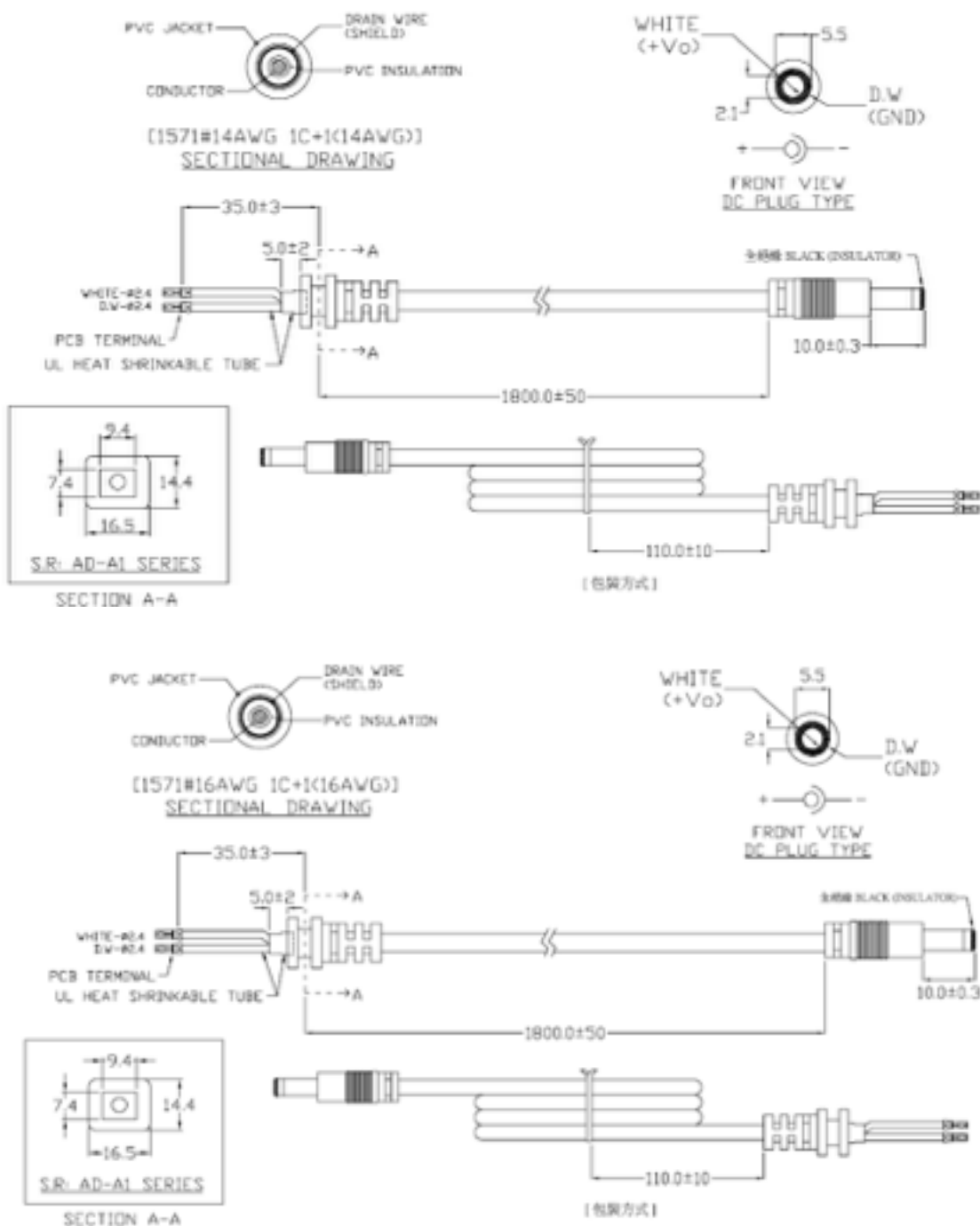


# ETA-USA

The Power Professionals

Dimension Diagram (mm)

60W



# ETA-USA

16170 Vineyard Blvd. Suite 180 Morgan Hill, CA 95037 <http://www.eta-usa.com>  
 Toll-free (US only): 800-ETA-POWR (800-382-7697) Telephone: 408 778-2793 FAX: 408-779-2753