



DTMF400-xxSX-F-W6

400W AC/DC Switching Adapter-Single Output



FEATURES:

- ITE 62368-1 & Medical 60601-1 approvals (Class I)
- 3-prong IEC320-C14, Class I AC inlet
- Medical safety approved (2x MOPP between primary to secondary)
- Suitable for BF application with appropriate system consideration
- ITE/Medical up to 5000 meter altitude during operation
- < 0.5W No Load Input Power
- Touch current less than 100uAA
- Meet IEC60601-1-2 Ed4:2014
- 3 year warranty

Pending August 2022



| MODEL/CHANNEL | | Unit | DTMF400-12SX-F-W6 | DTMF400-19SX-F-W6 | DTMF400-24SX-F-W6 |
|---------------|-------------------------|------|--|-------------------|-------------------|
| OUTPUT | Norminal Voltage | V | 12 | 19 | 24 |
| | Norminal Current | A | 31.66A | 21.05A | 16.66A |
| | Ripple & Noise Max | mV | 120mV | 190mV | 240mV |
| | Max. Output Power | Po | 380 | 400 | |
| MODEL/CHANNEL | | Unit | DTMF400-28SX-F-W6 | DTMF400-48SX-F-W6 | |
| OUTPUT | Norminal Voltage | V | 28 | 48 | |
| | Norminal Current | A | 14.28A | 8.33A | |
| | Ripple & Noise Max | mV | 300mV | | |
| | Max. Output Power | Po | 400 | | |
| OUTPUT | Touch Current | - | < 100uA @264VAC | | |
| | Hold Up Time | - | > 10ms typical @full load, 115VAC | | |
| | Output Regulation | % | ±5 | | |
| | Output Power | W | 400 | | |
| | Temperature Coefficient | °C | ±0.05% per°C maximum. | | |
| INPUT | Hold Up Time | ms | 10mS Typ. @ 115VAC | | |
| | Input Voltage Range | V | 90-264VAC | | |
| | Frequency | A | 47-63Hz | | |
| | Input Current (rms) | A | 3A; 115 VAC/60Hz | | |
| | Power factor | - | > 0.95 @115VAC; > 0.90 @230VAC @full load 4.2A @115VAC; 2.1A @230VAC max. | | |
| | Efficiency | % | > 92% @80% Full load, 230VAC > 87.5% @Average efficiency, 115/230VAC | | |
| | Earth leakage current | VAC | < 250uA @264VAC | | |
| | Inrush current | VAC | < 45A peak @115VAC; < 80A peak @230VAC | | |

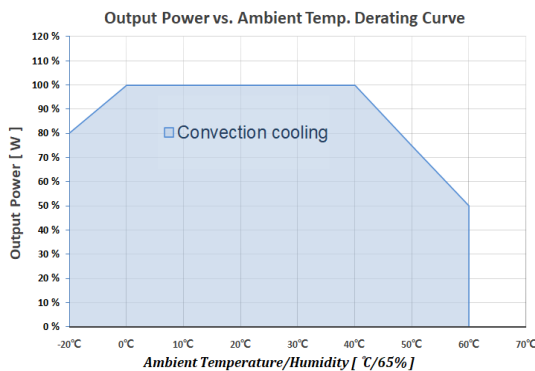
- Note: 1. Ripple and noise are measured at oscilloscope 20MHz bandwidth by a 47uF electrolytic capacitor and a 0.1uF ceramic capacitor in parallel at output connector.
2. (-1 to -20°C ambient temperature and EMS Immunity worse case O/P Regulation)
3. The switching frequency of this series is set within 56 to 85KHz at full load.
4. The ripple and noise of this series is tested under full load condition.
5. 480W peak 3s @115VAC , 520W peak 3s @ 230VAC. +/-10%



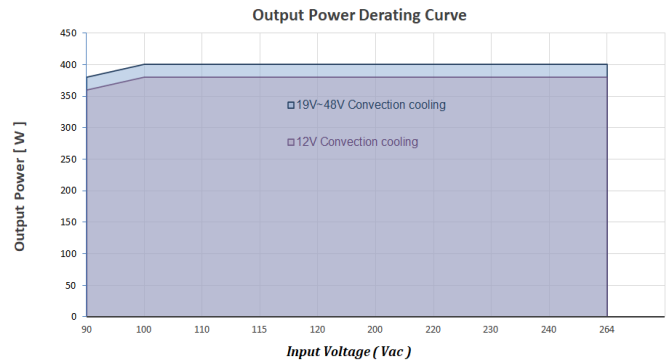


| | MODEL/CHANNEL | Unit | |
|-------------------------------|----------------------------|------|--|
| Protection | Overvoltage Protection | Vdc | Auto-recovery |
| | Short Circuit Protection | V | Auto-recovery |
| | Over Load Protection | % | Auto-recovery |
| | Over Temp Protection | °C | Latch off type. AC Recycle. |
| Environmental Agencies | Safety Standards | - | UL/cUL 60601-1 3.1 TUV EN60601-1 3.1 CB IEC60601-1 3.1 UL/c-UL UL62368-1 TUV EN62368-1 CB IEC62368-1 |
| | EMC Standards | - | EN60601-1-2 IEC60601-1-2 Ed4:2014 EN 55011 Class B CE EN 55032 Class B EN 55035 Class B FCC Part 15 Class B FCC Part 18 Class B |
| Environment | Operating temp. & Humidity | - | 0 to +60°C (Refer to "Derating Curve")/ 10% to 95%, Non-condensing. |
| | Temperature | - | -30°C to +60°C (Derate linearly 2.5% per °C from 41 to 60°C) (Derate linearly 1.0% per °C from -1 to -30°C) |
| | Storage temp. & Humidity | - | -20°C to +85°C; 0 to 95%, non condensing |
| | Burn-in Test | - | 100% burn-in tested under 40 +/-5°C. |
| | MTBF demonstrated | H | > 230,000 hours @full load and 25°C ambient temperature based on Bellcore TR-332 |
| Dimension | Size(LxWxH) / Weight | mm/g | L222xW112xH45mm (8.74"x4.4"x1.77")/1.63 kgs. (3.59 lbs.) |

Derating Curve 400W



380W / 400W Convection cooling :
 Derate linearly 2.5% per°C from 41 to 60°C.
 Derate linearly 1% per°C from -1 to -20°C.

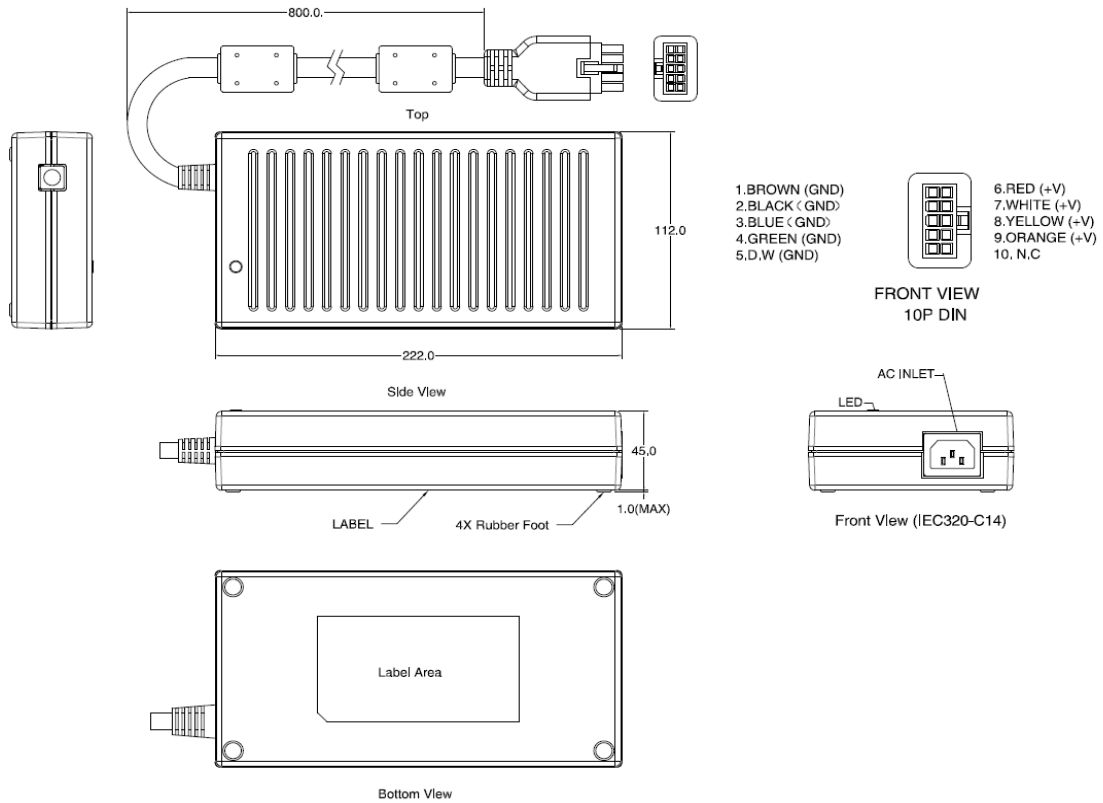


12V Convection cooling max output 380W
 19V~48V Convection cooling max output 400W
 Derate linearly 0.5% per Vac from 100 to 90Vac





Dimensional Drawings



Dimension : L222(8.74") x W112(4.4") x H45(1.77")mm
NOTE : TOLERANCE:±1.5mm(0.06")(LxWxH)

Standard Output Cable

OD of DC cable 400W is 9.5mm





MECHANICAL SPECIFICATION

MATCHING CONNECTORS

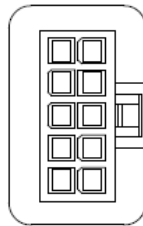
DC Output Connector

Standard male plug(power supply side): 10 PIN Mini Fit Pitch:4.2mm

Mating Connector : Molex P/N: 39-28-1123 or equivalent.

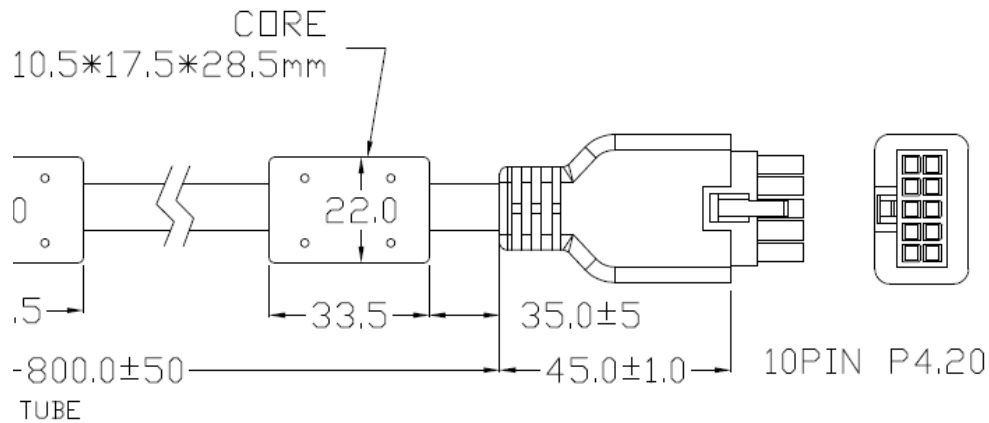
DC output cable: 8C+1, UL2464, 16AWG, VW-1, 80, 300V

- 1.BROWN (GND)
- 2.BLACK (GND)
- 3.BLUE (GND)
- 4.GREEN (GND)
- 5.D.W (GND)



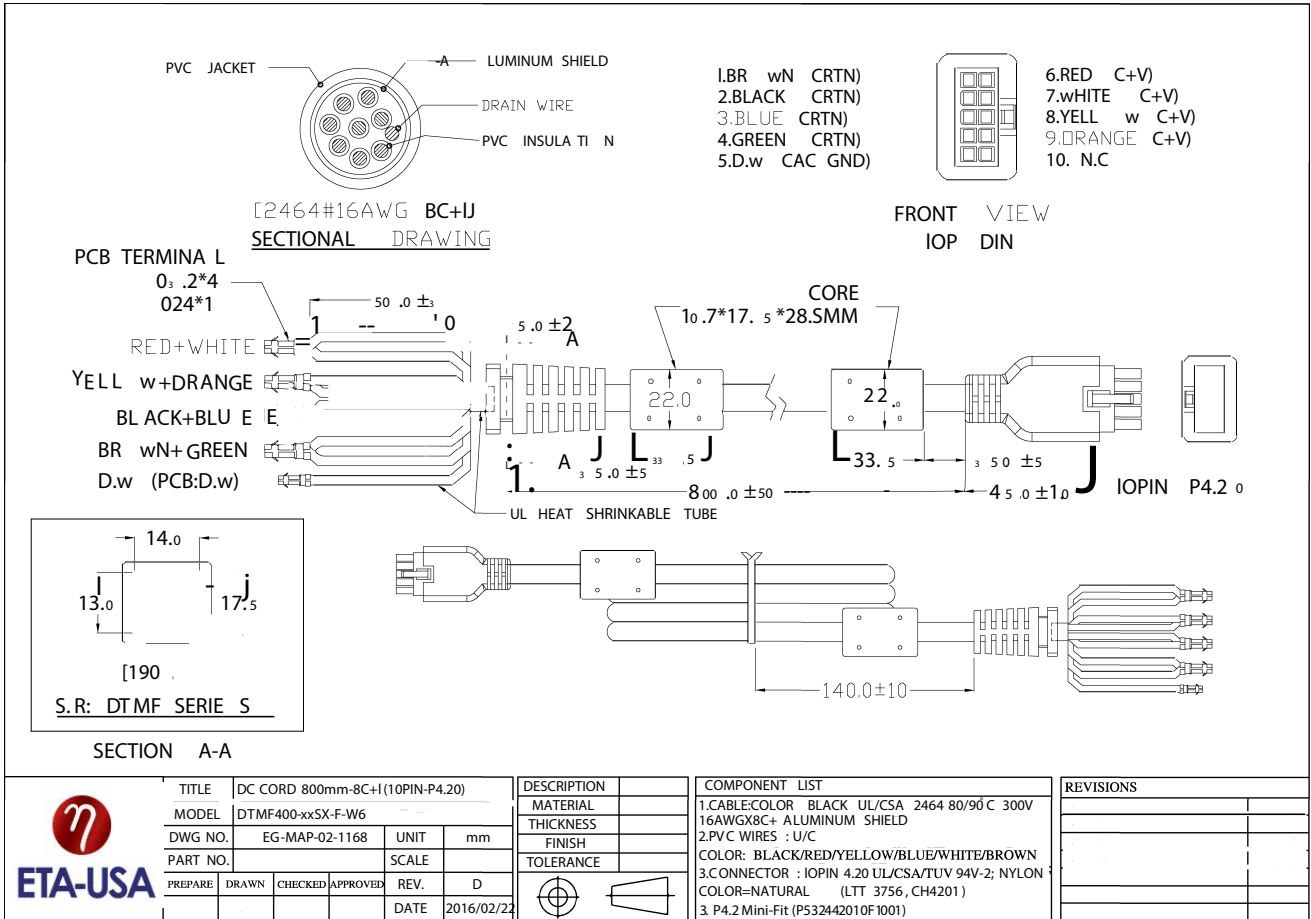
- 6.RED (+V)
- 7.WHITE (+V)
- 8.YELLOW (+V)
- 9.ORANGE (+V)
10. N.C

FRONT VIEW
10P DIN





MECHANICAL SPECIFICATION



| | | | |
|----------|----------------------------------|---------|------------|
| TITLE | DC CORD 800mm-8C+I (10PIN-P4.20) | | |
| MODEL | DTMF400-xxSX-F-W6 | | |
| DWG NO. | EG-MAP-02-1168 | UNIT | mm |
| PART NO. | | SCALE | |
| PREPARE | DRAWN | CHECKED | APPROVED |
| | | REV. | D |
| | | DATE | 2016/02/22 |

| DESCRIPTION | COMPONENT LIST |
|-------------|--|
| MATERIAL | 1.CABLE:COLOR BLACK UL/CSA 2464 80/90C 300V |
| THICKNESS | 16AWGX8C+ ALUMINUM SHIELD |
| FINISH | 2.PVC WIRES : U/C |
| TOLERANCE | COLOR: BLACK/RED/YELLOW/BLUE/WHITE/BROWN |
| | 3.C CONNECTOR : IOPIN 4.20 UL/CSA/TUV 94V-2; NYLON |
| | COLOR=NATURAL (LIT 3756, CH4201) |
| | 3. P4.2 Mini-Fit (P532442010F1001) |

| REVISIONS |
|-----------|
| |
| |
| |
| |
| |

EG-B3C010 REV.B

